

# APPENDIX G

## Loading Requirements

Each applicant for a trunked system shall certify that a minimum of 100 mobiles for each 12.5 kHz channel block will be placed in service within five years of the initial plan approval date. If that is not the case, then less than fully loaded channels shall be returned to the allotment pool and the licensee shall modify their license accordingly. Conventional channels shall be loaded to 100 mobile stations per 12.5 kHz channel block. Where an applicant does not load a 12.5 kHz channel block to 70 mobile radios, the channel block will be available for assignment to other licensees. Mobile, portable and control stations will be considered as mobile units. An applicant will be required to provide loading information consistent with this plan. If an applicant is unable to reach minimum loading criteria, and should a system licensed to a higher level of government be available in the area, the applicant must consider utilizing this system. As the higher-level systems reach their capacity, the smaller systems in the public safety service must then consider uniting their communications efforts to formulate one large system, when feasible.

# Appendix H

## Region Plan Appeal Process

## Appeal Procedure

Appeals from decisions made with respect to a variety of matters regulated by the Regional Planning process and MPSFAC will be heard. The formal requirements of the appeal process are set out below.

In order to ensure that the appeal process is open and understandable to the public, the Regional Committee has developed this procedure. Those involved in the appeal process can expect the Committee and its members to follow the procedures. Where any matter arises during the course of an appeal that is not dealt with in this document, the Committee will do whatever is necessary to enable it to be resolved fairly, effectively and completely on the appeal. The Committee may dispense with any part of this procedure where it is appropriate to do so.

The MPSFAC will make every effort to process appeals in a timely fashion and issue decisions expeditiously.

### Appeals Committee

#### *Members*

The MPSFAC Chairman may organize the Committee into Sub-Committees, each comprised of one or more members.

Where an appeal is scheduled to be heard by a Sub-Committee the chair is determined as follows:

- (a) if the chair of the Committee is on the Sub-Committee they are the chair;
- (b) if the chair of the Committee is not on the Sub-Committee but the vice-chair is then the vice-chair will be the chair; and
- (c) if neither the chair nor the vice-chair is on the Sub-Committee, the MPSFAC Committee will designate one of the members to be the chair.

#### *Withdrawal or Disqualification of a Committee Member on the Grounds of Bias*

Where the chair or a Committee member becomes aware of any facts that would lead an informed person, viewing the matter reasonably and practically, to conclude that a member, whether consciously or unconsciously, would not decide a matter fairly, the member will be prohibited from conducting the appeal unless consent is obtained from all parties to continue. In addition, any party to an appeal may challenge a member on the basis of real or a reasonable apprehension of bias.

### THE APPEAL PROCESS

An official of the entity who filed the original application to the MPSFAC must be the person who files the appeal on behalf of the entity.

#### *How to appeal*

A notice of appeal must be served upon the MPSFAC. The notice of appeal may be “delivered” by mail, courier, or hand delivered to the office of the Chair and all Members of the Committee. See page 18 for information. The Committee will also accept a notice of appeal by electronic means to the Chair and Secretary with the original paper copy of the notice of appeal served as indicated above.

Certain things must be included in a notice of appeal for it to be accepted. The notice of appeal must include:

1. the name and address of the appellant;

2. the name of the person, if any, making the request for an appeal on behalf of the appellant;
3. the address for service of the appellant;
4. the grounds for appeal (a detailed explanation of the appellant's objections to the determination – describe errors in the decision);
5. a description of the relief requested (what do you want the MPSFAC/Committee/Sub-Committee to order at the end of the appeal);
6. The signature of the appellant or the appellant's representative; and data.

*Time limit for filing the appeal*

To appeal a determination or allocation the entity must deliver a notice of appeal within 10 business days after receiving the decision. If a notice of appeal is not delivered within the time required, the right to an appeal is lost. However, the Committee is allowed to extend the deadline, either before or after its expiration based upon a 2/3 majority of the Committee.

*Rejection of a notice of appeal*

The Committee may reject a notice of appeal if:

- (a) It is determined that the appellant does not have standing to appeal; or
- (b) The Committee does not have jurisdiction over the subject matter or the remedy sought.

Before a notice of appeal is rejected, the MPSFAC will inform the appellant of this in writing, with reasons. The appellant an opportunity to make submissions within 10 business days.

*Appeal Meeting*

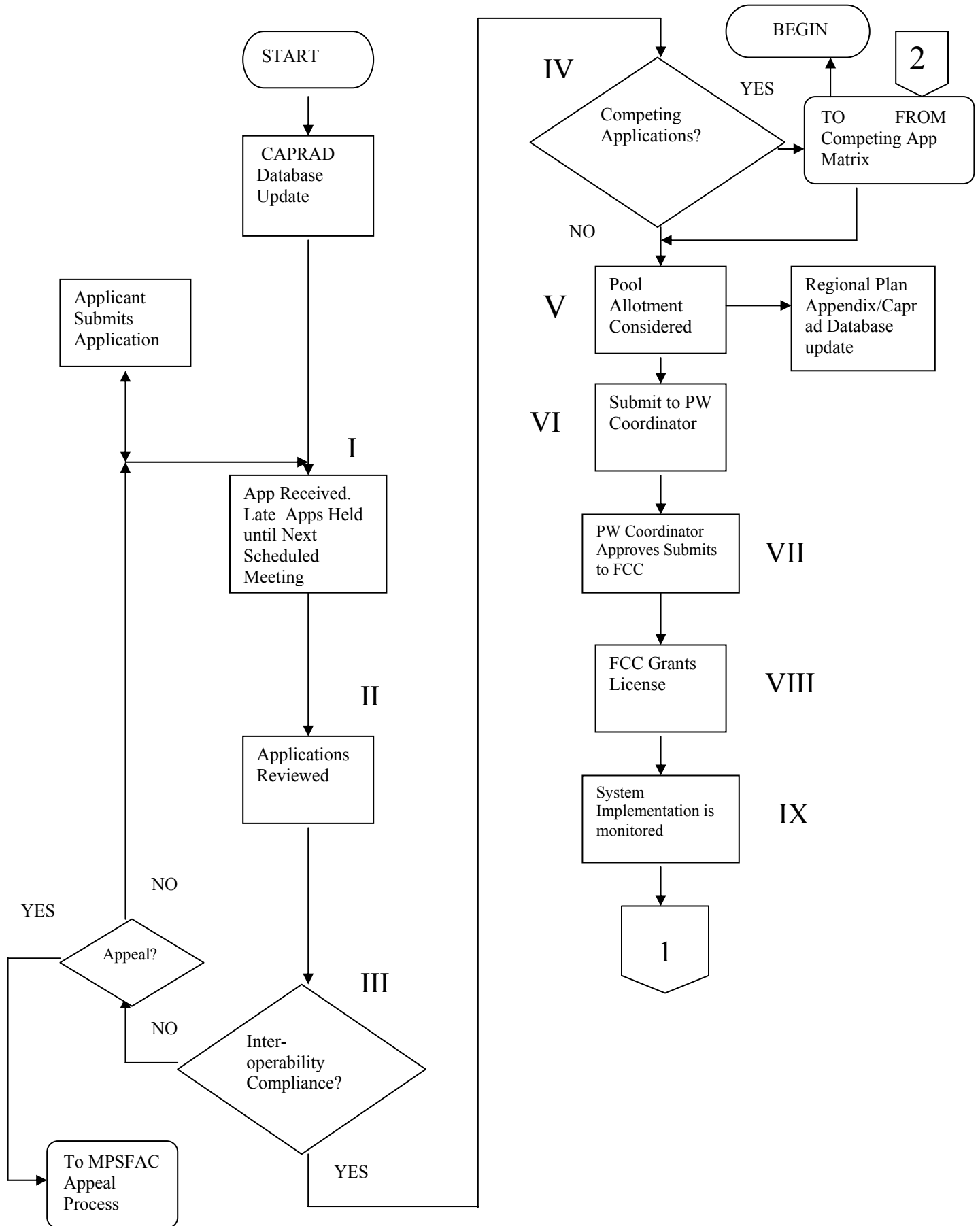
The MPSFAC and/or established Sub-Committee will set a meeting date to review the appeal documents submitted by the applicant and meet with them to discuss the issue in an open meeting. The MPSFAC will arrive at a decision based upon the documents presented, FCC rules, NCC requirements, and the regional plan and advise the applicant of the decision.

Committee members will not contact a party on any matter relevant to the merits of the appeal, unless that member puts all other parties on notice and gives them an opportunity to participate.

Note: All applicants ultimately have a right to appeal directly the Federal Communications Commission

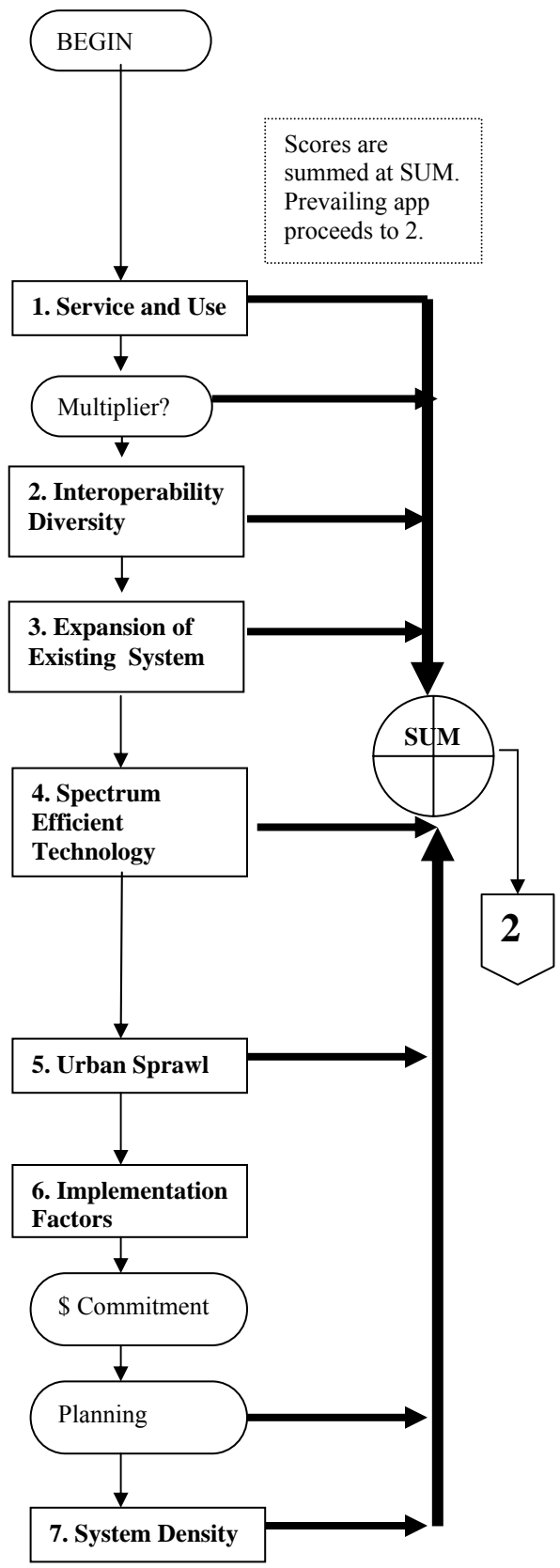
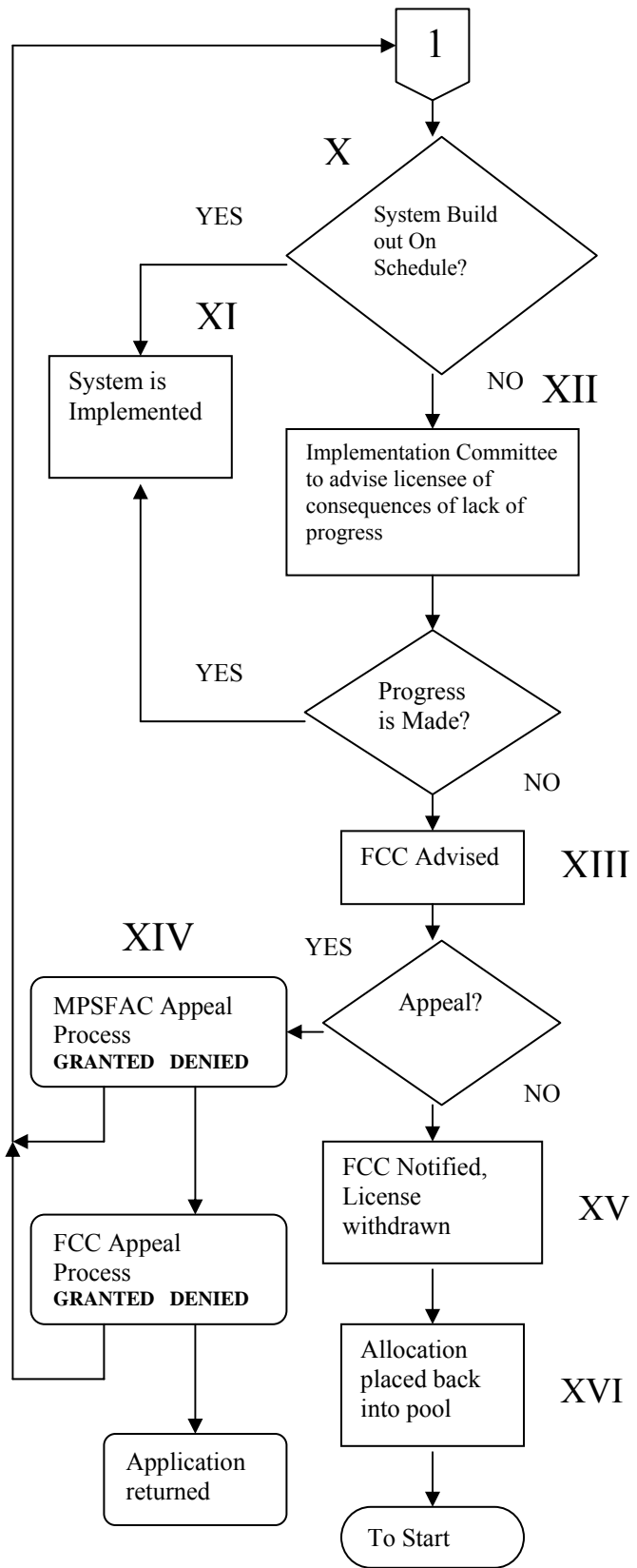
## Appendix I

# Application Submission and Approval and Competing Application Evaluation Flow Charts



Application Submission and Approval, cont

Competing Application Flow Chart





# APPENDIX J

## SPECTRUM ALLOTMENT

Canada/US Border Sharing Zone 1 Sector 1 Canadian Primary channels highlighted in **RED**.  
Canadian/US Border Protection Zone channels highlighted in **BLUE**. These channels are US Primary channels but are secondary in the Sharing Zone and are highlighted in **BLUE** for planning purposes.

Channel blocks highlighted in **YELLOW** with **RED** entries denote a split channel block

Note: The following counties are partially in Sharing Zone 1 and partially in Sector 1 and are therefore considered to be entirely in Sharing Zone 1: Antrim, Branch, Calhoun, Charlevoix, Chippewa, Eaton, Emmet, Mackinac.

Allotments of counties partially in Sharing Zone 1 and partially in the Protection Zone are shown in **RED**; however, for licensing purposes, an individual radio site may fall in either zone with the determination made using distance to the international border. Thus, a particular channel allotment may be secondary to Canadian operations in one part of a county but US primary at a location farther from the international border.

Alcona

General Use	Voice 25.0KHz	97-100	769.6125	799.6125
General Use	Voice 25.0KHz	173-176	770.0875	800.0875
General Use	Voice 25.0KHz	353-356	771.2125	801.2125
General Use	Voice 25.0KHz	405-408	771.5375	801.5375
General Use	Voice 25.0KHz	481-484	772.0125	802.0125
General Use	Voice 25.0KHz	549-552	772.4375	802.4375
General Use	Voice 25.0KHz	601-604	772.7625	802.7625
General Use	Voice 25.0KHz	749-752	773.6875	803.6875
General Use	Voice 25.0KHz	861-864	774.3875	804.3875
General Use	Voice 25.0KHz	909-912	774.6875	804.6875
State License	Voice 25.0KHz	73-76	769.4625	799.4625
State License	Voice 25.0KHz	113-116	769.7125	799.7125
State License	Voice 25.0KHz	273-276	770.7125	800.7125
State License	Voice 25.0KHz	765-768	773.7875	803.7875

Alger

General Use	Voice 25.0KHz	97-100	769.6125	799.6125
General Use	Voice 25.0KHz	177-180	770.1125	800.1125
General Use	Voice 25.0KHz	217-220	770.3625	800.3625
General Use	Voice 25.0KHz	289-292	770.8125	800.8125
General Use	Voice 25.0KHz	349-352	771.1875	801.1875
General Use	Voice 25.0KHz	389-392	771.4375	801.4375
General Use	Voice 25.0KHz	433-436	771.7125	801.7125
General Use	Voice 25.0KHz	517-520	772.2375	802.2375
General Use	Voice 25.0KHz	557-560	772.4875	802.4875
General Use	Voice 25.0KHz	601-604	772.7625	802.7625
General Use	Voice 25.0KHz	705-708	773.4125	803.4125
General Use	Voice 25.0KHz	789-792	773.9375	803.9375
General Use	Voice 25.0KHz	837-840	774.2375	804.2375
State License	Voice 25.0KHz	25-28	769.1625	799.1625
State License	Voice 25.0KHz	149-152	769.9375	799.9375
State License	Voice 25.0KHz	845-848	774.2875	804.2875
State License	Voice 25.0KHz	885-888	774.5375	804.5375

Allegan

General Use	Voice 25.0KHz	81-84	769.5125	799.5125
General Use	Voice 25.0KHz	133-136	769.8375	799.8375
General Use	Voice 25.0KHz	201-204	770.2625	800.2625
General Use	Voice 25.0KHz	385-388	771.4125	801.4125
General Use	Voice 25.0KHz	445-448	771.7875	801.7875
General Use	Voice 25.0KHz	517-520	772.2375	802.2375
General Use	Voice 25.0KHz	557-560	772.4875	802.4875
General Use	Voice 25.0KHz	609-612	772.8125	802.8125
General Use	Voice 25.0KHz	861-864	774.3875	804.3875
General Use	Voice 25.0KHz	901-904	774.6375	804.6375
State License	Voice 25.0KHz	145-148	769.9125	799.9125
State License	Voice 25.0KHz	313-316	770.9625	800.9625
State License	Voice 25.0KHz	729-732	773.5625	803.5625
State License	Voice 25.0KHz	853-856	774.3375	804.3375

Alpena

General Use	Voice 25.0KHz	45-48	769.2875	799.2875
General Use	Voice 25.0KHz	89-92	769.5625	799.5625
General Use	Voice 25.0KHz	133-136	769.8375	799.8375
General Use	Voice 25.0KHz	205-208	770.2875	800.2875
General Use	Voice 25.0KHz	249-252	770.5625	800.5625
General Use	Voice 25.0KHz	325-328	771.0375	801.0375
General Use	Voice 25.0KHz	365-368	771.2875	801.2875
General Use	Voice 25.0KHz	433-436	771.7125	801.7125
General Use	Voice 25.0KHz	473-476	771.9625	801.9625
General Use	Voice 25.0KHz	529-532	772.3125	802.3125
General Use	Voice 25.0KHz	569-572	772.5625	802.5625
General Use	Voice 25.0KHz	609-612	772.8125	802.8125
General Use	Voice 25.0KHz	669-672	773.1875	803.1875
General Use	Voice 25.0KHz	709-712	773.4375	803.4375
General Use	Voice 25.0KHz	757-760	773.7375	803.7375
General Use	Voice 25.0KHz	829-832	774.1875	804.1875
General Use	Voice 25.0KHz	945-948	774.9125	804.9125
State License	Voice 25.0KHz	33-36	769.2125	799.2125
State License	Voice 25.0KHz	225-228	770.4125	800.4125
State License	Voice 25.0KHz	309-312	770.9375	800.9375
State License	Voice 25.0KHz	649-652	773.0625	803.0625
State License	Voice 25.0KHz	733-736	773.5875	803.5875
State License	Voice 25.0KHz	813-816	774.0875	804.0875
State License	Voice 25.0KHz	933-936	774.8375	804.8375

Antrim

General Use	Voice 25.0KHz	53-56	769.3375	799.3375
General Use	Voice 25.0KHz	133-136	769.8375	799.8375
General Use	Voice 25.0KHz	209-212	770.3125	800.3125
General Use	Voice 25.0KHz	341-344	771.1375	801.1375
General Use	Voice 25.0KHz	389-392	771.4375	801.4375
General Use	Voice 25.0KHz	437-440	771.7375	801.7375
General Use	Voice 25.0KHz	505-508	772.1625	802.1625
General Use	Voice 25.0KHz	549-552	772.4375	802.4375
General Use	Voice 25.0KHz	609-612	772.8125	802.8125
General Use	Voice 25.0KHz	701-704	773.3875	803.3875
General Use	Voice 25.0KHz	861-864	774.3875	804.3875
State License	Voice 25.0KHz	229-232	770.4375	800.4375
State License	Voice 25.0KHz	269-272	770.6875	800.6875
State License	Voice 25.0KHz	729-732	773.5625	803.5625
State License	Voice 25.0KHz	813-816	774.0875	804.0875

Arenac

General Use	Voice 25.0KHz	285-288	770.7875	800.7875
General Use	Voice 25.0KHz	349-352	771.1875	801.1875
General Use	Voice 25.0KHz	397-400	771.4875	801.4875
General Use	Voice 25.0KHz	445-448	771.7875	801.7875
General Use	Voice 25.0KHz	521-524	772.2625	802.2625
General Use	Voice 25.0KHz	605-608	772.7875	802.7875
General Use	Voice 25.0KHz	741-744	773.6375	803.6375
General Use	Voice 25.0KHz	789-792	773.9375	803.9375
State License	Voice 25.0KHz	69-72	769.4375	799.4375

State License	Voice 25.0KHz	269-272	770.6875	800.6875
State License	Voice 25.0KHz	893-896	774.5875	804.5875
<u>Baraga</u>				
General Use	Voice 25.0KHz	13-16	769.0875	799.0875
General Use	Voice 25.0KHz	217-220	770.3625	800.3625
General Use	Voice 25.0KHz	297-300	770.8625	800.8625
General Use	Voice 25.0KHz	413-416	771.5875	801.5875
General Use	Voice 25.0KHz	461-464	771.8875	801.8875
General Use	Voice 25.0KHz	505-508	772.1625	802.1625
General Use	Voice 25.0KHz	585-588	772.6625	802.6625
General Use	Voice 25.0KHz	633-636	772.9625	802.9625
General Use	Voice 25.0KHz	705-708	773.4125	803.4125
General Use	Voice 25.0KHz	757-760	773.7375	803.7375
General Use	Voice 25.0KHz	833-836	774.2125	804.2125
State License	Voice 25.0KHz	69-72	769.4375	799.4375
State License	Voice 25.0KHz	153-156	769.9625	799.9625
State License	Voice 25.0KHz	269-272	770.6875	800.6875
State License	Voice 25.0KHz	689-692	773.3125	803.3125
State License	Voice 25.0KHz	885-888	774.5375	804.5375
<u>Barry</u>				
General Use	Voice 25.0KHz	329-332	771.0625	801.0625
General Use	Voice 25.0KHz	369-372	771.3125	801.3125
General Use	Voice 25.0KHz	413-416	771.5875	801.5875
General Use	Voice 25.0KHz	509-512	772.1875	802.1875
General Use	Voice 25.0KHz	617-620	772.8625	802.8625
General Use	Voice 25.0KHz	713-716	773.4625	803.4625
State License	Voice 25.0KHz	29-32	769.1875	799.1875
State License	Voice 25.0KHz	193-196	770.2125	800.2125
<u>Bay</u>				
General Use	Voice 25.0KHz	17-20	769.1125	799.1125
General Use	Voice 25.0KHz	57-60	769.3625	799.3625
General Use	Voice 25.0KHz	121-124	769.7625	799.7625
General Use	Voice 25.0KHz	161-164	770.0125	800.0125
General Use	Voice 25.0KHz	249-252	770.5625	800.5625
General Use	Voice 25.0KHz	325-328	771.0375	801.0375
General Use	Voice 25.0KHz	377-380	771.3625	801.3625
General Use	Voice 25.0KHz	417-420	771.6125	801.6125
General Use	Voice 25.0KHz	457-460	771.8625	801.8625
General Use	Voice 25.0KHz	533-536	772.3375	802.3375
General Use	Voice 25.0KHz	581-584	772.6375	802.6375
General Use	Voice 25.0KHz	637-640	772.9875	802.9875
General Use	Voice 25.0KHz	713-716	773.4625	803.4625
General Use	Voice 25.0KHz	837-840	774.2375	804.2375
General Use	Voice 25.0KHz	877-880	774.4875	804.4875
General Use	Voice 25.0KHz	945-948	774.9125	804.9125
State License	Voice 25.0KHz	33-36	769.2125	799.2125
State License	Voice 25.0KHz	105-108	769.6625	799.6625
State License	Voice 25.0KHz	225-228	770.4125	800.4125
State License	Voice 25.0KHz	305-308	770.9125	800.9125
State License	Voice 25.0KHz	733-736	773.5875	803.5875
State License	Voice 25.0KHz	845-848	774.2875	804.2875

State License	Voice 25.0KHz	933-936	774.8375	804.8375
<u>Benzie</u>				
General Use	Voice 25.0KHz	217-220	770.3625	800.3625
General Use	Voice 25.0KHz	369-372	771.3125	801.3125
General Use	Voice 25.0KHz	421-424	771.6375	801.6375
General Use	Voice 25.0KHz	461-464	771.8875	801.8875
General Use	Voice 25.0KHz	501-504	772.1375	802.1375
General Use	Voice 25.0KHz	541-544	772.3875	802.3875
General Use	Voice 25.0KHz	597-600	772.7375	802.7375
General Use	Voice 25.0KHz	709-712	773.4375	803.4375
State License	Voice 25.0KHz	65-68	769.4125	799.4125
State License	Voice 25.0KHz	653-656	773.0875	803.0875
State License	Voice 25.0KHz	765-768	773.7875	803.7875
<u>Berrien</u>				
General Use	Voice 25.0KHz	53-56	769.3375	799.3375
General Use	Voice 25.0KHz	177-180	770.1125	800.1125
General Use	Voice 25.0KHz	241-244	770.5125	800.5125
General Use	Voice 25.0KHz	281-284	770.7625	800.7625
General Use	Voice 25.0KHz	341-344	771.1375	801.1375
General Use	Voice 25.0KHz	381-384	771.3875	801.3875
General Use	Voice 25.0KHz	457-460	771.8625	801.8625
General Use	Voice 25.0KHz	513-516	772.2125	802.2125
General Use	Voice 25.0KHz	553-556	772.4625	802.4625
General Use	Voice 25.0KHz	597-600	772.7375	802.7375
General Use	Voice 25.0KHz	673-676	773.2125	803.2125
General Use	Voice 25.0KHz	745-748	773.6625	803.6625
General Use	Voice 25.0KHz	793-796	773.9625	803.9625
General Use	Voice 25.0KHz	877-880	774.4875	804.4875
General Use	Voice 25.0KHz	917-920	774.7375	804.7375
State License	Voice 25.0KHz	25-28	769.1625	799.1625
State License	Voice 25.0KHz	69-72	769.4375	799.4375
State License	Voice 25.0KHz	189-192	770.1875	800.1875
State License	Voice 25.0KHz	229-232	770.4375	800.4375
State License	Voice 25.0KHz	849-852	774.3125	804.3125
<u>Branch</u>				
General Use	Voice 25.0KHz	125-128	769.7875	799.7875
General Use	Voice 25.0KHz	177-180	770.1125	800.1125
General Use	Voice 25.0KHz	241-244	770.5125	800.5125
General Use	Voice 25.0KHz	373-376	771.3375	801.3375
General Use	Voice 25.0KHz	441-444	771.7625	801.7625
General Use	Voice 25.0KHz	553-556	772.4625	802.4625
General Use	Voice 25.0KHz	625-628	772.9125	802.9125
State License	Voice 25.0KHz	25-28	769.1625	799.1625
State License	Voice 25.0KHz	693-696	773.3375	803.3375
State License	Voice 25.0KHz	885-888	774.5375	804.5375
<u>Calhoun</u>				
General Use	Voice 25.0KHz	53-56	769.3375	799.3375
General Use	Voice 25.0KHz	137-140	769.8625	799.8625
General Use	Voice 25.0KHz	205-208	770.2875	800.2875
General Use	Voice 25.0KHz	257-260	770.6125	800.6125
General Use	Voice 25.0KHz	341-344	771.1375	801.1375

General Use	Voice 25.0KHz	393-396	771.4625	801.4625
<a href="#">General Use</a>	<a href="#">Voice 25.0KHz</a>	<a href="#">433-436</a>	<a href="#">771.7125</a>	<a href="#">801.7125</a>
General Use	Voice 25.0KHz	537-540	772.3625	802.3625
General Use	Voice 25.0KHz	577-580	772.6125	802.6125
General Use	Voice 25.0KHz	669-672	773.1875	803.1875
General Use	Voice 25.0KHz	757-760	773.7375	803.7375
General Use	Voice 25.0KHz	905-908	774.6625	804.6625
State License	Voice 25.0KHz	65-68	769.4125	799.4125
<a href="#">State License</a>	<a href="#">Voice 25.0KHz</a>	<a href="#">309-312</a>	<a href="#">770.9375</a>	<a href="#">800.9375</a>
State License	Voice 25.0KHz	685-688	773.2875	803.2875
State License	Voice 25.0KHz	733-736	773.5875	803.5875
<u>Cass</u>				
General Use	Voice 25.0KHz	13-16	769.0875	799.0875
General Use	Voice 25.0KHz	129-132	769.8125	799.8125
General Use	Voice 25.0KHz	297-300	770.8625	800.8625
General Use	Voice 25.0KHz	357-360	771.2375	801.2375
General Use	Voice 25.0KHz	437-440	771.7375	801.7375
General Use	Voice 25.0KHz	613-616	772.8375	802.8375
State License	Voice 25.0KHz	149-152	769.9375	799.9375
State License	Voice 25.0KHz	305-308	770.9125	800.9125
<u>Charlevoix</u>				
General Use	Voice 25.0KHz	13-16	769.0875	799.0875
General Use	Voice 25.0KHz	217-220	770.3625	800.3625
General Use	Voice 25.0KHz	333-336	771.0875	801.0875
General Use	Voice 25.0KHz	405-408	771.5375	801.5375
<a href="#">General Use</a>	<a href="#">Voice 25.0KHz</a>	<a href="#">445-448</a>	<a href="#">771.7875</a>	<a href="#">801.7875</a>
<a href="#">General Use</a>	<a href="#">Voice 25.0KHz</a>	<a href="#">485-488</a>	<a href="#">772.0375</a>	<a href="#">802.0375</a>
General Use	Voice 25.0KHz	533-536	772.3375	802.3375
General Use	Voice 25.0KHz	581-584	772.6375	802.6375
General Use	Voice 25.0KHz	629-632	772.9375	802.9375
General Use	Voice 25.0KHz	781-784	773.8875	803.8875
General Use	Voice 25.0KHz	869-872	774.4375	804.4375
General Use	Voice 25.0KHz	909-912	774.6875	804.6875
State License	Voice 25.0KHz	29-32	769.1875	799.1875
State License	Voice 25.0KHz	69-72	769.4375	799.4375
State License	Voice 25.0KHz	113-116	769.7125	799.7125
State License	Voice 25.0KHz	189-192	770.1875	800.1875
State License	Voice 25.0KHz	765-768	773.7875	803.7875
<u>Cheboygan</u>				
General Use	Voice 25.0KHz	49-52	769.3125	799.3125
General Use	Voice 25.0KHz	137-140	769.8625	799.8625
General Use	Voice 25.0KHz	177-180	770.1125	800.1125
General Use	Voice 25.0KHz	257-260	770.6125	800.6125
General Use	Voice 25.0KHz	349-352	771.1875	801.1875
General Use	Voice 25.0KHz	397-400	771.4875	801.4875
<a href="#">General Use</a>	<a href="#">Voice 25.0KHz</a>	<a href="#">469-472</a>	<a href="#">771.9375</a>	<a href="#">801.9375</a>
General Use	Voice 25.0KHz	545-548	772.4125	802.4125
General Use	Voice 25.0KHz	593-596	772.7125	802.7125
General Use	Voice 25.0KHz	661-664	773.1375	803.1375
General Use	Voice 25.0KHz	705-708	773.4125	803.4125
General Use	Voice 25.0KHz	797-800	773.9875	803.9875

General Use	Voice 25.0KHz	837-840	774.2375	804.2375
General Use	Voice 25.0KHz	877-880	774.4875	804.4875
General Use	Voice 25.0KHz	917-920	774.7375	804.7375
State License	Voice 25.0KHz	233-236	770.4625	800.4625
State License	Voice 25.0KHz	313-316	770.9625	800.9625
State License	Voice 25.0KHz	645-648	773.0375	803.0375
State License	Voice 25.0KHz	693-696	773.3375	803.3375
State License	Voice 25.0KHz	773-776	773.8375	803.8375
<u>Chippewa</u>				
General Use	Voice 25.0KHz	45-48	769.2875	799.2875
General Use	Voice 25.0KHz	89-92	769.5625	799.5625
General Use	Voice 25.0KHz	133-136	769.8375	799.8375
General Use	Voice 25.0KHz	213-216	770.3375	800.3375
General Use	Voice 25.0KHz	253-256	770.5875	800.5875
General Use	Voice 25.0KHz	293-296	770.8375	800.8375
General Use	Voice 25.0KHz	341-344	771.1375	801.1375
General Use	Voice 25.0KHz	385-388	771.4125	801.4125
General Use	Voice 25.0KHz	441-444	771.7625	801.7625
General Use	Voice 25.0KHz	505-508	772.1625	802.1625
General Use	Voice 25.0KHz	561-564	772.5125	802.5125
General Use	Voice 25.0KHz	609-612	772.8125	802.8125
General Use	Voice 25.0KHz	669-672	773.1875	803.1875
General Use	Voice 25.0KHz	709-712	773.4375	803.4375
General Use	Voice 25.0KHz	749-752	773.6875	803.6875
General Use	Voice 25.0KHz	833-836	774.2125	804.2125
General Use	Voice 25.0KHz	873-876	774.4625	804.4625
General Use	Voice 25.0KHz	945-948	774.9125	804.9125
State License	Voice 25.0KHz	33-36	769.2125	799.2125
State License	Voice 25.0KHz	105-108	769.6625	799.6625
State License	Voice 25.0KHz	145-148	769.9125	799.9125
State License	Voice 25.0KHz	269-272	770.6875	800.6875
State License	Voice 25.0KHz	309-312	770.9375	800.9375
State License	Voice 25.0KHz	649-652	773.0625	803.0625
State License	Voice 25.0KHz	689-692	773.3125	803.3125
State License	Voice 25.0KHz	729-732	773.5625	803.5625
State License	Voice 25.0KHz	769-772	773.8125	803.8125
State License	Voice 25.0KHz	893-896	774.5875	804.5875
State License	Voice 25.0KHz	933-936	774.8375	804.8375
<u>Clare</u>				
General Use	Voice 25.0KHz	49-52	769.3125	799.3125
General Use	Voice 25.0KHz	89-92	769.5625	799.5625
General Use	Voice 25.0KHz	321-324	771.0125	801.0125
General Use	Voice 25.0KHz	369-372	771.3125	801.3125
General Use	Voice 25.0KHz	421-424	771.6375	801.6375
General Use	Voice 25.0KHz	509-512	772.1875	802.1875
General Use	Voice 25.0KHz	557-560	772.4875	802.4875
General Use	Voice 25.0KHz	609-612	772.8125	802.8125
General Use	Voice 25.0KHz	781-784	773.8875	803.8875
General Use	Voice 25.0KHz	861-864	774.3875	804.3875
General Use	Voice 25.0KHz	909-912	774.6875	804.6875
State License	Voice 25.0KHz	65-68	769.4125	799.4125

State License	Voice 25.0KHz	729-732	773.5625	803.5625
State License	Voice 25.0KHz	849-852	774.3125	804.3125
<u>Clinton</u>				
General Use	Voice 25.0KHz	245-248	770.5375	800.5375
General Use	Voice 25.0KHz	321-324	771.0125	801.0125
General Use	Voice 25.0KHz	361-364	771.2625	801.2625
General Use	Voice 25.0KHz	421-424	771.6375	801.6375
General Use	Voice 25.0KHz	541-544	772.3875	802.3875
General Use	Voice 25.0KHz	585-588	772.6625	802.6625
General Use	Voice 25.0KHz	629-632	772.9375	802.9375
State License	Voice 25.0KHz	25-28	769.1625	799.1625
State License	Voice 25.0KHz	69-72	769.4375	799.4375
State License	Voice 25.0KHz	693-696	773.3375	803.3375
<u>Crawford</u>				
General Use	Voice 25.0KHz	121-124	769.7625	799.7625
General Use	Voice 25.0KHz	289-292	770.8125	800.8125
General Use	Voice 25.0KHz	377-380	771.3625	801.3625
General Use	Voice 25.0KHz	417-420	771.6125	801.6125
General Use	Voice 25.0KHz	573-576	772.5875	802.5875
General Use	Voice 25.0KHz	665-668	773.1625	803.1625
General Use	Voice 25.0KHz	793-796	773.9625	803.9625
General Use	Voice 25.0KHz	873-876	774.4625	804.4625
General Use	Voice 25.0KHz	913-916	774.7125	804.7125
State License	Voice 25.0KHz	153-156	769.9625	799.9625
State License	Voice 25.0KHz	305-308	770.9125	800.9125
State License	Voice 25.0KHz	769-772	773.8125	803.8125
<u>Delta</u>				
General Use	Voice 25.0KHz	13-16	769.0875	799.0875
General Use	Voice 25.0KHz	53-56	769.3375	799.3375
General Use	Voice 25.0KHz	121-124	769.7625	799.7625
General Use	Voice 25.0KHz	209-212	770.3125	800.3125
General Use	Voice 25.0KHz	249-252	770.5625	800.5625
General Use	Voice 25.0KHz	297-300	770.8625	800.8625
General Use	Voice 25.0KHz	341-344	771.1375	801.1375
General Use	Voice 25.0KHz	381-384	771.3875	801.3875
General Use	Voice 25.0KHz	469-472	771.9375	801.9375
General Use	Voice 25.0KHz	525-528	772.2875	802.2875
General Use	Voice 25.0KHz	565-568	772.5375	802.5375
General Use	Voice 25.0KHz	613-616	772.8375	802.8375
General Use	Voice 25.0KHz	673-676	773.2125	803.2125
General Use	Voice 25.0KHz	713-716	773.4625	803.4625
General Use	Voice 25.0KHz	757-760	773.7375	803.7375
General Use	Voice 25.0KHz	825-828	774.1625	804.1625
General Use	Voice 25.0KHz	913-916	774.7125	804.7125
State License	Voice 25.0KHz	69-72	769.4375	799.4375
State License	Voice 25.0KHz	109-112	769.6875	799.6875
State License	Voice 25.0KHz	185-188	770.1625	800.1625
State License	Voice 25.0KHz	225-228	770.4125	800.4125
State License	Voice 25.0KHz	273-276	770.7125	800.7125
State License	Voice 25.0KHz	653-656	773.0875	803.0875
State License	Voice 25.0KHz	733-736	773.5875	803.5875



State License	Voice 25.0KHz	773-776	773.8375	803.8375
State License	Voice 25.0KHz	893-896	774.5875	804.5875
<u>Dickinson</u>				
General Use	Voice 25.0KHz	17-20	769.1125	799.1125
General Use	Voice 25.0KHz	57-60	769.3625	799.3625
General Use	Voice 25.0KHz	125-128	769.7875	799.7875
General Use	Voice 25.0KHz	293-296	770.8375	800.8375
General Use	Voice 25.0KHz	337-340	771.1125	801.1125
General Use	Voice 25.0KHz	377-380	771.3625	801.3625
General Use	Voice 25.0KHz	417-420	771.6125	801.6125
General Use	Voice 25.0KHz	457-460	771.8625	801.8625
General Use	Voice 25.0KHz	497-500	772.1125	802.1125
General Use	Voice 25.0KHz	541-544	772.3875	802.3875
General Use	Voice 25.0KHz	609-612	772.8125	802.8125
General Use	Voice 25.0KHz	717-720	773.4875	803.4875
General Use	Voice 25.0KHz	829-832	774.1875	804.1875
State License	Voice 25.0KHz	65-68	769.4125	799.4125
State License	Voice 25.0KHz	105-108	769.6625	799.6625
State License	Voice 25.0KHz	265-268	770.6625	800.6625
State License	Voice 25.0KHz	693-696	773.3375	803.3375
State License	Voice 25.0KHz	889-892	774.5625	804.5625
<u>Eaton</u>				
General Use	Voice 25.0KHz	129-132	769.8125	799.8125
General Use	Voice 25.0KHz	281-284	770.7625	800.7625
General Use	Voice 25.0KHz	381-384	771.3875	801.3875
General Use	Voice 25.0KHz	485-488	772.0375	802.0375
General Use	Voice 25.0KHz	565-568	772.5375	802.5375
General Use	Voice 25.0KHz	637-640	772.9875	802.9875
General Use	Voice 25.0KHz	701-704	773.3875	803.3875
General Use	Voice 25.0KHz	789-792	773.9375	803.9375
General Use	Voice 25.0KHz	917-920	774.7375	804.7375
State License	Voice 25.0KHz	113-116	769.7125	799.7125
State License	Voice 25.0KHz	273-276	770.7125	800.7125
State License	Voice 25.0KHz	805-808	774.0375	804.0375
<u>Emmet</u>				
General Use	Voice 25.0KHz	41-44	769.2625	799.2625
General Use	Voice 25.0KHz	129-132	769.8125	799.8125
General Use	Voice 25.0KHz	169-172	770.0625	800.0625
General Use	Voice 25.0KHz	249-252	770.5625	800.5625
General Use	Voice 25.0KHz	297-300	770.8625	800.8625
General Use	Voice 25.0KHz	373-376	771.3375	801.3375
General Use	Voice 25.0KHz	413-416	771.5875	801.5875
General Use	Voice 25.0KHz	461-464	771.8875	801.8875
General Use	Voice 25.0KHz	509-512	772.1875	802.1875
General Use	Voice 25.0KHz	553-556	772.4625	802.4625
General Use	Voice 25.0KHz	601-604	772.7625	802.7625
General Use	Voice 25.0KHz	677-680	773.2375	803.2375
General Use	Voice 25.0KHz	745-748	773.6625	803.6625
General Use	Voice 25.0KHz	789-792	773.9375	803.9375
General Use	Voice 25.0KHz	829-832	774.1875	804.1875
State License	Voice 25.0KHz	225-228	770.4125	800.4125

State License	Voice 25.0KHz	273-276	770.7125	800.7125
State License	Voice 25.0KHz	733-736	773.5875	803.5875
State License	Voice 25.0KHz	805-808	774.0375	804.0375
State License	Voice 25.0KHz	849-852	774.3125	804.3125
State License	Voice 25.0KHz	929-932	774.8125	804.8125
<u>Genesee</u>				
General Use	Voice 25.0KHz	49-52	769.3125	799.3125
General Use	Voice 25.0KHz	125-128	769.7875	799.7875
General Use	Voice 25.0KHz	165-168	770.0375	800.0375
General Use	Voice 25.0KHz	205-208	770.2875	800.2875
General Use	Voice 25.0KHz	253-256	770.5875	800.5875
General Use	Voice 25.0KHz	329-332	771.0625	801.0625
General Use	Voice 25.0KHz	369-372	771.3125	801.3125
General Use	Voice 25.0KHz	413-416	771.5875	801.5875
General Use	Voice 25.0KHz	453-456	771.8375	801.8375
General Use	Voice 25.0KHz	589-592	772.6875	802.6875
General Use	Voice 25.0KHz	633-636	772.9625	802.9625
General Use	Voice 25.0KHz	741-744	773.6375	803.6375
General Use	Voice 25.0KHz	781-784	773.8875	803.8875
General Use	Voice 25.0KHz	833-836	774.2125	804.2125
General Use	Voice 25.0KHz	873-876	774.4625	804.4625
General Use	Voice 25.0KHz	941-944	774.8875	804.8875
State License	Voice 25.0KHz	109-112	769.6875	799.6875
State License	Voice 25.0KHz	309-312	770.9375	800.9375
State License	Voice 25.0KHz	689-692	773.3125	803.3125
State License	Voice 25.0KHz	925-928	774.7875	804.7875
<u>Gladwin</u>				
General Use	Voice 25.0KHz	205-208	770.2875	800.2875
General Use	Voice 25.0KHz	385-388	771.4125	801.4125
General Use	Voice 25.0KHz	433-436	771.7125	801.7125
General Use	Voice 25.0KHz	477-480	771.9875	801.9875
General Use	Voice 25.0KHz	569-572	772.5625	802.5625
General Use	Voice 25.0KHz	621-624	772.8875	802.8875
General Use	Voice 25.0KHz	753-756	773.7125	803.7125
General Use	Voice 25.0KHz	797-800	773.9875	803.9875
General Use	Voice 25.0KHz	869-872	774.4375	804.4375
State License	Voice 25.0KHz	649-652	773.0625	803.0625
State License	Voice 25.0KHz	693-696	773.3375	803.3375
State License	Voice 25.0KHz	773-776	773.8375	803.8375
State License	Voice 25.0KHz	813-816	774.0875	804.0875
State License	Voice 25.0KHz	925-928	774.7875	804.7875
<u>Gogebic</u>				
General Use	Voice 25.0KHz	17-20	769.1125	799.1125
General Use	Voice 25.0KHz	81-84	769.5125	799.5125
General Use	Voice 25.0KHz	161-164	770.0125	800.0125
General Use	Voice 25.0KHz	213-216	770.3375	800.3375
General Use	Voice 25.0KHz	369-372	771.3125	801.3125
General Use	Voice 25.0KHz	417-420	771.6125	801.6125
General Use	Voice 25.0KHz	457-460	771.8625	801.8625
General Use	Voice 25.0KHz	501-504	772.1375	802.1375
General Use	Voice 25.0KHz	545-548	772.4125	802.4125

General Use	Voice 25.0KHz	617-620	772.8625	802.8625
General Use	Voice 25.0KHz	661-664	773.1375	803.1375
General Use	Voice 25.0KHz	701-704	773.3875	803.3875
General Use	Voice 25.0KHz	837-840	774.2375	804.2375
General Use	Voice 25.0KHz	909-912	774.6875	804.6875
State License	Voice 25.0KHz	65-68	769.4125	799.4125
State License	Voice 25.0KHz	233-236	770.4625	800.4625
State License	Voice 25.0KHz	273-276	770.7125	800.7125
State License	Voice 25.0KHz	685-688	773.2875	803.2875
State License	Voice 25.0KHz	925-928	774.7875	804.7875
<u>Grand Traverse</u>				
General Use	Voice 25.0KHz	45-48	769.2875	799.2875
General Use	Voice 25.0KHz	85-88	769.5375	799.5375
General Use	Voice 25.0KHz	125-128	769.7875	799.7875
General Use	Voice 25.0KHz	173-176	770.0875	800.0875
General Use	Voice 25.0KHz	245-248	770.5375	800.5375
General Use	Voice 25.0KHz	285-288	770.7875	800.7875
General Use	Voice 25.0KHz	325-328	771.0375	801.0375
General Use	Voice 25.0KHz	381-384	771.3875	801.3875
General Use	Voice 25.0KHz	429-432	771.6875	801.6875
General Use	Voice 25.0KHz	469-472	771.9375	801.9375
General Use	Voice 25.0KHz	529-532	772.3125	802.3125
General Use	Voice 25.0KHz	569-572	772.5625	802.5625
General Use	Voice 25.0KHz	621-624	772.8875	802.8875
General Use	Voice 25.0KHz	673-676	773.2125	803.2125
General Use	Voice 25.0KHz	749-752	773.6875	803.6875
General Use	Voice 25.0KHz	797-800	773.9875	803.9875
General Use	Voice 25.0KHz	837-840	774.2375	804.2375
General Use	Voice 25.0KHz	877-880	774.4875	804.4875
General Use	Voice 25.0KHz	945-948	774.9125	804.9125
State License	Voice 25.0KHz	73-76	769.4625	799.4625
State License	Voice 25.0KHz	149-152	769.9375	799.9375
State License	Voice 25.0KHz	193-196	770.2125	800.2125
State License	Voice 25.0KHz	645-648	773.0375	803.0375
State License	Voice 25.0KHz	693-696	773.3375	803.3375
State License	Voice 25.0KHz	773-776	773.8375	803.8375
State License	Voice 25.0KHz	845-848	774.2875	804.2875
State License	Voice 25.0KHz	885-888	774.5375	804.5375
State License	Voice 25.0KHz	925-928	774.7875	804.7875
<u>Gratiot</u>				
General Use	Voice 25.0KHz	53-56	769.3375	799.3375
General Use	Voice 25.0KHz	201-204	770.2625	800.2625
General Use	Voice 25.0KHz	333-336	771.0875	801.0875
General Use	Voice 25.0KHz	373-376	771.3375	801.3375
General Use	Voice 25.0KHz	437-440	771.7375	801.7375
General Use	Voice 25.0KHz	505-508	772.1625	802.1625
General Use	Voice 25.0KHz	717-720	773.4875	803.4875
General Use	Voice 25.0KHz	829-832	774.1875	804.1875
State License	Voice 25.0KHz	145-148	769.9125	799.9125
State License	Voice 25.0KHz	685-688	773.2875	803.2875
State License	Voice 25.0KHz	929-932	774.8125	804.8125

Hillsdale

General Use	Voice 25.0KHz	41-44	769.2625	799.2625
General Use	Voice 25.0KHz	169-172	770.0625	800.0625
General Use	Voice 25.0KHz	505-508	772.1625	802.1625
General Use	Voice 25.0KHz	569-572	772.5625	802.5625
General Use	Voice 25.0KHz	609-612	772.8125	802.8125
General Use	Voice 25.0KHz	821-824	774.1375	804.1375
General Use	Voice 25.0KHz	861-864	774.3875	804.3875
General Use	Voice 25.0KHz	945-948	774.9125	804.9125
State License	Voice 25.0KHz	109-112	769.6875	799.6875
State License	Voice 25.0KHz	225-228	770.4125	800.4125
State License	Voice 25.0KHz	893-896	774.5875	804.5875

Houghton

General Use	Voice 25.0KHz	41-44	769.2625	799.2625
General Use	Voice 25.0KHz	97-100	769.6125	799.6125
General Use	Voice 25.0KHz	137-140	769.8625	799.8625
General Use	Voice 25.0KHz	205-208	770.2875	800.2875
General Use	Voice 25.0KHz	245-248	770.5375	800.5375
General Use	Voice 25.0KHz	285-288	770.7875	800.7875
General Use	Voice 25.0KHz	357-360	771.2375	801.2375
General Use	Voice 25.0KHz	429-432	771.6875	801.6875
General Use	Voice 25.0KHz	473-476	771.9625	801.9625
General Use	Voice 25.0KHz	537-540	772.3625	802.3625
General Use	Voice 25.0KHz	577-580	772.6125	802.6125
General Use	Voice 25.0KHz	625-628	772.9125	802.9125
General Use	Voice 25.0KHz	669-672	773.1875	803.1875
General Use	Voice 25.0KHz	713-716	773.4625	803.4625
General Use	Voice 25.0KHz	781-784	773.8875	803.8875
General Use	Voice 25.0KHz	825-828	774.1625	804.1625
General Use	Voice 25.0KHz	869-872	774.4375	804.4375
General Use	Voice 25.0KHz	917-920	774.7375	804.7375
State License	Voice 25.0KHz	25-28	769.1625	799.1625
State License	Voice 25.0KHz	113-116	769.7125	799.7125
State License	Voice 25.0KHz	225-228	770.4125	800.4125
State License	Voice 25.0KHz	309-312	770.9375	800.9375
State License	Voice 25.0KHz	649-652	773.0625	803.0625
State License	Voice 25.0KHz	729-732	773.5625	803.5625
State License	Voice 25.0KHz	805-808	774.0375	804.0375

Huron

General Use	Voice 25.0KHz	45-48	769.2875	799.2875
General Use	Voice 25.0KHz	93-96	769.5875	799.5875
General Use	Voice 25.0KHz	137-140	769.8625	799.8625
General Use	Voice 25.0KHz	201-204	770.2625	800.2625
General Use	Voice 25.0KHz	241-244	770.5125	800.5125
General Use	Voice 25.0KHz	281-284	770.7625	800.7625
General Use	Voice 25.0KHz	321-324	771.0125	801.0125
General Use	Voice 25.0KHz	401-404	771.5125	801.5125
General Use	Voice 25.0KHz	441-444	771.7625	801.7625
General Use	Voice 25.0KHz	481-484	772.0125	802.0125
General Use	Voice 25.0KHz	545-548	772.4125	802.4125
General Use	Voice 25.0KHz	585-588	772.6625	802.6625

General Use	Voice 25.0KHz	625-628	772.9125	802.9125
General Use	Voice 25.0KHz	709-712	773.4375	803.4375
General Use	Voice 25.0KHz	785-788	773.9125	803.9125
General Use	Voice 25.0KHz	905-908	774.6625	804.6625
State License	Voice 25.0KHz	25-28	769.1625	799.1625
State License	Voice 25.0KHz	65-68	769.4125	799.4125
State License	Voice 25.0KHz	113-116	769.7125	799.7125
State License	Voice 25.0KHz	265-268	770.6625	800.6625
State License	Voice 25.0KHz	685-688	773.2875	803.2875
State License	Voice 25.0KHz	765-768	773.7875	803.7875
State License	Voice 25.0KHz	849-852	774.3125	804.3125
<u>Ingham</u>				
General Use	Voice 25.0KHz	13-16	769.0875	799.0875
General Use	Voice 25.0KHz	121-124	769.7625	799.7625
General Use	Voice 25.0KHz	173-176	770.0875	800.0875
General Use	Voice 25.0KHz	353-356	771.2125	801.2125
General Use	Voice 25.0KHz	409-412	771.5625	801.5625
General Use	Voice 25.0KHz	449-452	771.8125	801.8125
General Use	Voice 25.0KHz	501-504	772.1375	802.1375
General Use	Voice 25.0KHz	549-552	772.4375	802.4375
General Use	Voice 25.0KHz	601-604	772.7625	802.7625
General Use	Voice 25.0KHz	661-664	773.1375	803.1375
General Use	Voice 25.0KHz	709-712	773.4375	803.4375
General Use	Voice 25.0KHz	749-752	773.6875	803.6875
General Use	Voice 25.0KHz	825-828	774.1625	804.1625
General Use	Voice 25.0KHz	865-868	774.4125	804.4125
State License	Voice 25.0KHz	105-108	769.6625	799.6625
State License	Voice 25.0KHz	229-232	770.4375	800.4375
State License	Voice 25.0KHz	649-652	773.0625	803.0625
State License	Voice 25.0KHz	765-768	773.7875	803.7875
State License	Voice 25.0KHz	889-892	774.5625	804.5625
<u>Ionia</u>				
General Use	Voice 25.0KHz	253-256	770.5875	800.5875
General Use	Voice 25.0KHz	389-392	771.4375	801.4375
General Use	Voice 25.0KHz	461-464	771.8875	801.8875
General Use	Voice 25.0KHz	553-556	772.4625	802.4625
General Use	Voice 25.0KHz	605-608	772.7875	802.7875
General Use	Voice 25.0KHz	753-756	773.7125	803.7125
General Use	Voice 25.0KHz	869-872	774.4375	804.4375
State License	Voice 25.0KHz	725-728	773.5375	803.5375
State License	Voice 25.0KHz	849-852	774.3125	804.3125
<u>Iosco</u>				
General Use	Voice 25.0KHz	49-52	769.3125	799.3125
General Use	Voice 25.0KHz	125-128	769.7875	799.7875
General Use	Voice 25.0KHz	165-168	770.0375	800.0375
General Use	Voice 25.0KHz	213-216	770.3375	800.3375
General Use	Voice 25.0KHz	253-256	770.5875	800.5875
General Use	Voice 25.0KHz	293-296	770.8375	800.8375
General Use	Voice 25.0KHz	373-376	771.3375	801.3375
General Use	Voice 25.0KHz	413-416	771.5875	801.5875
General Use	Voice 25.0KHz	453-456	771.8375	801.8375

General Use	Voice 25.0KHz	493-496	772.0875	802.0875
General Use	Voice 25.0KHz	593-596	772.7125	802.7125
General Use	Voice 25.0KHz	633-636	772.9625	802.9625
General Use	Voice 25.0KHz	705-708	773.4125	803.4125
General Use	Voice 25.0KHz	781-784	773.8875	803.8875
General Use	Voice 25.0KHz	833-836	774.2125	804.2125
State License	Voice 25.0KHz	29-32	769.1875	799.1875
State License	Voice 25.0KHz	149-152	769.9375	799.9375
State License	Voice 25.0KHz	645-648	773.0375	803.0375
State License	Voice 25.0KHz	689-692	773.3125	803.3125
State License	Voice 25.0KHz	809-812	774.0625	804.0625
State License	Voice 25.0KHz	853-856	774.3375	804.3375
State License	Voice 25.0KHz	929-932	774.8125	804.8125
<u>Iron</u>				
General Use	Voice 25.0KHz	169-172	770.0625	800.0625
General Use	Voice 25.0KHz	253-256	770.5875	800.5875
General Use	Voice 25.0KHz	345-348	771.1625	801.1625
General Use	Voice 25.0KHz	389-392	771.4375	801.4375
General Use	Voice 25.0KHz	437-440	771.7375	801.7375
General Use	Voice 25.0KHz	521-524	772.2625	802.2625
General Use	Voice 25.0KHz	561-564	772.5125	802.5125
General Use	Voice 25.0KHz	601-604	772.7625	802.7625
General Use	Voice 25.0KHz	749-752	773.6875	803.6875
General Use	Voice 25.0KHz	789-792	773.9375	803.9375
State License	Voice 25.0KHz	145-148	769.9125	799.9125
State License	Voice 25.0KHz	845-848	774.2875	804.2875
State License	Voice 25.0KHz	933-936	774.8375	804.8375
<u>Isabella</u>				
General Use	Voice 25.0KHz	125-128	769.7875	799.7875
General Use	Voice 25.0KHz	165-168	770.0375	800.0375
General Use	Voice 25.0KHz	217-220	770.3625	800.3625
General Use	Voice 25.0KHz	293-296	770.8375	800.8375
General Use	Voice 25.0KHz	341-344	771.1375	801.1375
General Use	Voice 25.0KHz	409-412	771.5625	801.5625
General Use	Voice 25.0KHz	453-456	771.8375	801.8375
General Use	Voice 25.0KHz	493-496	772.0875	802.0875
General Use	Voice 25.0KHz	537-540	772.3625	802.3625
General Use	Voice 25.0KHz	589-592	772.6875	802.6875
General Use	Voice 25.0KHz	633-636	772.9625	802.9625
General Use	Voice 25.0KHz	709-712	773.4375	803.4375
General Use	Voice 25.0KHz	941-944	774.8875	804.8875
State License	Voice 25.0KHz	29-32	769.1875	799.1875
State License	Voice 25.0KHz	229-232	770.4375	800.4375
State License	Voice 25.0KHz	309-312	770.9375	800.9375
<u>Jackson</u>				
General Use	Voice 25.0KHz	89-92	769.5625	799.5625
General Use	Voice 25.0KHz	161-164	770.0125	800.0125
General Use	Voice 25.0KHz	213-216	770.3375	800.3375
General Use	Voice 25.0KHz	325-328	771.0375	801.0375
General Use	Voice 25.0KHz	365-368	771.2875	801.2875
General Use	Voice 25.0KHz	465-468	771.9125	801.9125

<b>General Use</b>	<b>Voice 25.0KHz</b>	<b>513-516</b>	<b>772.2125</b>	<b>802.2125</b>
General Use	Voice 25.0KHz	593-596	772.7125	802.7125
General Use	Voice 25.0KHz	717-720	773.4875	803.4875
General Use	Voice 25.0KHz	837-840	774.2375	804.2375
State License	Voice 25.0KHz	149-152	769.9375	799.9375
State License	Voice 25.0KHz	189-192	770.1875	800.1875
State License	Voice 25.0KHz	929-932	774.8125	804.8125
<u>Kalamazoo</u>				
General Use	Voice 25.0KHz	45-48	769.2875	799.2875
General Use	Voice 25.0KHz	93-96	769.5875	799.5875
General Use	Voice 25.0KHz	165-168	770.0375	800.0375
General Use	Voice 25.0KHz	249-252	770.5625	800.5625
General Use	Voice 25.0KHz	289-292	770.8125	800.8125
General Use	Voice 25.0KHz	349-352	771.1875	801.1875
General Use	Voice 25.0KHz	401-404	771.5125	801.5125
General Use	Voice 25.0KHz	453-456	771.8375	801.8375
General Use	Voice 25.0KHz	493-496	772.0875	802.0875
General Use	Voice 25.0KHz	545-548	772.4125	802.4125
General Use	Voice 25.0KHz	589-592	772.6875	802.6875
General Use	Voice 25.0KHz	633-636	772.9625	802.9625
General Use	Voice 25.0KHz	677-680	773.2375	803.2375
General Use	Voice 25.0KHz	741-744	773.6375	803.6375
General Use	Voice 25.0KHz	785-788	773.9125	803.9125
General Use	Voice 25.0KHz	833-836	774.2125	804.2125
General Use	Voice 25.0KHz	873-876	774.4625	804.4625
General Use	Voice 25.0KHz	941-944	774.8875	804.8875
State License	Voice 25.0KHz	185-188	770.1625	800.1625
State License	Voice 25.0KHz	233-236	770.4625	800.4625
State License	Voice 25.0KHz	653-656	773.0875	803.0875
State License	Voice 25.0KHz	769-772	773.8125	803.8125
State License	Voice 25.0KHz	845-848	774.2875	804.2875
State License	Voice 25.0KHz	933-936	774.8375	804.8375
<u>Kalkaska</u>				
General Use	Voice 25.0KHz	161-164	770.0125	800.0125
General Use	Voice 25.0KHz	365-368	771.2875	801.2875
General Use	Voice 25.0KHz	409-412	771.5625	801.5625
General Use	Voice 25.0KHz	497-500	772.1125	802.1125
General Use	Voice 25.0KHz	537-540	772.3625	802.3625
General Use	Voice 25.0KHz	589-592	772.6875	802.6875
General Use	Voice 25.0KHz	785-788	773.9125	803.9125
General Use	Voice 25.0KHz	905-908	774.6625	804.6625
State License	Voice 25.0KHz	33-36	769.2125	799.2125
State License	Voice 25.0KHz	685-688	773.2875	803.2875
State License	Voice 25.0KHz	853-856	774.3375	804.3375
<u>Kent</u>				
General Use	Voice 25.0KHz	17-20	769.1125	799.1125
General Use	Voice 25.0KHz	57-60	769.3625	799.3625
General Use	Voice 25.0KHz	97-100	769.6125	799.6125
General Use	Voice 25.0KHz	169-172	770.0625	800.0625
General Use	Voice 25.0KHz	213-216	770.3375	800.3375
General Use	Voice 25.0KHz	297-300	770.8625	800.8625

General Use	Voice 25.0KHz	337-340	771.1125	801.1125
General Use	Voice 25.0KHz	377-380	771.3625	801.3625
General Use	Voice 25.0KHz	429-432	771.6875	801.6875
General Use	Voice 25.0KHz	477-480	771.9875	801.9875
General Use	Voice 25.0KHz	529-532	772.3125	802.3125
General Use	Voice 25.0KHz	581-584	772.6375	802.6375
General Use	Voice 25.0KHz	625-628	772.9125	802.9125
General Use	Voice 25.0KHz	665-668	773.1625	803.1625
General Use	Voice 25.0KHz	705-708	773.4125	803.4125
General Use	Voice 25.0KHz	745-748	773.6625	803.6625
General Use	Voice 25.0KHz	793-796	773.9625	803.9625
General Use	Voice 25.0KHz	837-840	774.2375	804.2375
General Use	Voice 25.0KHz	877-880	774.4875	804.4875
General Use	Voice 25.0KHz	945-948	774.9125	804.9125
State License	Voice 25.0KHz	73-76	769.4625	799.4625
State License	Voice 25.0KHz	153-156	769.9625	799.9625
State License	Voice 25.0KHz	225-228	770.4125	800.4125
State License	Voice 25.0KHz	265-268	770.6625	800.6625
State License	Voice 25.0KHz	305-308	770.9125	800.9125
State License	Voice 25.0KHz	645-648	773.0375	803.0375
State License	Voice 25.0KHz	689-692	773.3125	803.3125
State License	Voice 25.0KHz	773-776	773.8375	803.8375
State License	Voice 25.0KHz	813-816	774.0875	804.0875
State License	Voice 25.0KHz	885-888	774.5375	804.5375
State License	Voice 25.0KHz	925-928	774.7875	804.7875
<u>Keweenaw</u>				
General Use	Voice 25.0KHz	17-20	769.1125	799.1125
General Use	Voice 25.0KHz	81-84	769.5125	799.5125
General Use	Voice 25.0KHz	121-124	769.7625	799.7625
General Use	Voice 25.0KHz	161-164	770.0125	800.0125
General Use	Voice 25.0KHz	257-260	770.6125	800.6125
<b>General Use</b>	<b>Voice 25.0KHz</b>	<b>325-328</b>	<b>771.0375</b>	<b>801.0375</b>
General Use	Voice 25.0KHz	377-380	771.3625	801.3625
General Use	Voice 25.0KHz	421-424	771.6375	801.6375
General Use	Voice 25.0KHz	481-484	772.0125	802.0125
General Use	Voice 25.0KHz	521-524	772.2625	802.2625
General Use	Voice 25.0KHz	569-572	772.5625	802.5625
General Use	Voice 25.0KHz	609-612	772.8125	802.8125
General Use	Voice 25.0KHz	661-664	773.1375	803.1375
General Use	Voice 25.0KHz	701-704	773.3875	803.3875
General Use	Voice 25.0KHz	745-748	773.6625	803.6625
General Use	Voice 25.0KHz	793-796	773.9625	803.9625
General Use	Voice 25.0KHz	837-840	774.2375	804.2375
General Use	Voice 25.0KHz	901-904	774.6375	804.6375
State License	Voice 25.0KHz	65-68	769.4125	799.4125
State License	Voice 25.0KHz	105-108	769.6625	799.6625
State License	Voice 25.0KHz	149-152	769.9375	799.9375
State License	Voice 25.0KHz	189-192	770.1875	800.1875
State License	Voice 25.0KHz	273-276	770.7125	800.7125
State License	Voice 25.0KHz	685-688	773.2875	803.2875
State License	Voice 25.0KHz	769-772	773.8125	803.8125



State License	Voice 25.0KHz	845-848	774.2875	804.2875
State License	Voice 25.0KHz	889-892	774.5625	804.5625
State License	Voice 25.0KHz	929-932	774.8125	804.8125
<u>Lake</u>				
General Use	Voice 25.0KHz	133-136	769.8375	799.8375
General Use	Voice 25.0KHz	209-212	770.3125	800.3125
General Use	Voice 25.0KHz	373-376	771.3375	801.3375
General Use	Voice 25.0KHz	425-428	771.6625	801.6625
General Use	Voice 25.0KHz	485-488	772.0375	802.0375
General Use	Voice 25.0KHz	533-536	772.3375	802.3375
General Use	Voice 25.0KHz	585-588	772.6625	802.6625
General Use	Voice 25.0KHz	629-632	772.9375	802.9375
State License	Voice 25.0KHz	69-72	769.4375	799.4375
State License	Voice 25.0KHz	649-652	773.0625	803.0625
State License	Voice 25.0KHz	725-728	773.5375	803.5375
<u>Lapeer</u>				
General Use	Voice 25.0KHz	89-92	769.5625	799.5625
General Use	Voice 25.0KHz	217-220	770.3625	800.3625
General Use	Voice 25.0KHz	341-344	771.1375	801.1375
General Use	Voice 25.0KHz	381-384	771.3875	801.3875
General Use	Voice 25.0KHz	421-424	771.6375	801.6375
General Use	Voice 25.0KHz	465-468	771.9125	801.9125
General Use	Voice 25.0KHz	529-532	772.3125	802.3125
General Use	Voice 25.0KHz	577-580	772.6125	802.6125
General Use	Voice 25.0KHz	621-624	772.8875	802.8875
State License	Voice 25.0KHz	29-32	769.1875	799.1875
<u>Leelanau</u>				
General Use	Voice 25.0KHz	201-204	770.2625	800.2625
General Use	Voice 25.0KHz	293-296	770.8375	800.8375
General Use	Voice 25.0KHz	345-348	771.1625	801.1625
General Use	Voice 25.0KHz	397-400	771.4875	801.4875
General Use	Voice 25.0KHz	453-456	771.8375	801.8375
General Use	Voice 25.0KHz	493-496	772.0875	802.0875
General Use	Voice 25.0KHz	585-588	772.6625	802.6625
General Use	Voice 25.0KHz	633-636	772.9625	802.9625
General Use	Voice 25.0KHz	741-744	773.6375	803.6375
General Use	Voice 25.0KHz	825-828	774.1625	804.1625
General Use	Voice 25.0KHz	901-904	774.6375	804.6375
State License	Voice 25.0KHz	25-28	769.1625	799.1625
State License	Voice 25.0KHz	109-112	769.6875	799.6875
State License	Voice 25.0KHz	309-312	770.9375	800.9375
State License	Voice 25.0KHz	725-728	773.5375	803.5375
State License	Voice 25.0KHz	809-812	774.0625	804.0625
<u>Lenawee</u>				
General Use	Voice 25.0KHz	81-84	769.5125	799.5125
General Use	Voice 25.0KHz	133-136	769.8375	799.8375
General Use	Voice 25.0KHz	345-348	771.1625	801.1625
General Use	Voice 25.0KHz	389-392	771.4375	801.4375
General Use	Voice 25.0KHz	429-432	771.6875	801.6875
General Use	Voice 25.0KHz	473-476	771.9625	801.9625
General Use	Voice 25.0KHz	541-544	772.3875	802.3875

General Use	Voice 25.0KHz	585-588	772.6625	802.6625
General Use	Voice 25.0KHz	629-632	772.9375	802.9375
General Use	Voice 25.0KHz	741-744	773.6375	803.6375
State License	Voice 25.0KHz	69-72	769.4375	799.4375
State License	Voice 25.0KHz	809-812	774.0625	804.0625
<u>Livingston</u>				
General Use	Voice 25.0KHz	241-244	770.5125	800.5125
General Use	Voice 25.0KHz	297-300	770.8625	800.8625
General Use	Voice 25.0KHz	385-388	771.4125	801.4125
General Use	Voice 25.0KHz	425-428	771.6625	801.6625
General Use	Voice 25.0KHz	493-496	772.0875	802.0875
General Use	Voice 25.0KHz	533-536	772.3375	802.3375
General Use	Voice 25.0KHz	581-584	772.6375	802.6375
General Use	Voice 25.0KHz	625-628	772.9125	802.9125
State License	Voice 25.0KHz	73-76	769.4625	799.4625
State License	Voice 25.0KHz	845-848	774.2875	804.2875
<u>Luce</u>				
General Use	Voice 25.0KHz	17-20	769.1125	799.1125
General Use	Voice 25.0KHz	57-60	769.3625	799.3625
General Use	Voice 25.0KHz	125-128	769.7875	799.7875
General Use	Voice 25.0KHz	169-172	770.0625	800.0625
General Use	Voice 25.0KHz	329-332	771.0625	801.0625
General Use	Voice 25.0KHz	373-376	771.3375	801.3375
General Use	Voice 25.0KHz	413-416	771.5875	801.5875
General Use	Voice 25.0KHz	461-464	771.8875	801.8875
General Use	Voice 25.0KHz	537-540	772.3625	802.3625
General Use	Voice 25.0KHz	577-580	772.6125	802.6125
General Use	Voice 25.0KHz	617-620	772.8625	802.8625
General Use	Voice 25.0KHz	661-664	773.1375	803.1375
General Use	Voice 25.0KHz	717-720	773.4875	803.4875
General Use	Voice 25.0KHz	797-800	773.9875	803.9875
General Use	Voice 25.0KHz	917-920	774.7375	804.7375
State License	Voice 25.0KHz	65-68	769.4125	799.4125
State License	Voice 25.0KHz	233-236	770.4625	800.4625
State License	Voice 25.0KHz	853-856	774.3375	804.3375
<u>Mackinac</u>				
General Use	Voice 25.0KHz	81-84	769.5125	799.5125
General Use	Voice 25.0KHz	161-164	770.0125	800.0125
General Use	Voice 25.0KHz	201-204	770.2625	800.2625
General Use	Voice 25.0KHz	241-244	770.5125	800.5125
General Use	Voice 25.0KHz	281-284	770.7625	800.7625
General Use	Voice 25.0KHz	321-324	771.0125	801.0125
General Use	Voice 25.0KHz	365-368	771.2875	801.2875
General Use	Voice 25.0KHz	425-428	771.6625	801.6625
General Use	Voice 25.0KHz	477-480	771.9875	801.9875
General Use	Voice 25.0KHz	521-524	772.2625	802.2625
General Use	Voice 25.0KHz	569-572	772.5625	802.5625
General Use	Voice 25.0KHz	633-636	772.9625	802.9625
General Use	Voice 25.0KHz	821-824	774.1375	804.1375
General Use	Voice 25.0KHz	861-864	774.3875	804.3875

General Use	Voice 25.0KHz	901-904	774.6375	804.6375
State License	Voice 25.0KHz	73-76	769.4625	799.4625
State License	Voice 25.0KHz	153-156	769.9625	799.9625
State License	Voice 25.0KHz	193-196	770.2125	800.2125
State License	Voice 25.0KHz	813-816	774.0875	804.0875
<u>Macomb</u>				
General Use	Voice 25.0KHz	121-124	769.7625	799.7625
General Use	Voice 25.0KHz	161-164	770.0125	800.0125
General Use	Voice 25.0KHz	201-204	770.2625	800.2625
General Use	Voice 25.0KHz	245-248	770.5375	800.5375
General Use	Voice 25.0KHz	293-296	770.8375	800.8375
General Use	Voice 25.0KHz	333-336	771.0875	801.0875
General Use	Voice 25.0KHz	373-376	771.3375	801.3375
General Use	Voice 25.0KHz	445-448	771.7875	801.7875
General Use	Voice 25.0KHz	497-500	772.1125	802.1125
General Use	Voice 25.0KHz	537-540	772.3625	802.3625
General Use	Voice 25.0KHz	585-588	772.6625	802.6625
General Use	Voice 25.0KHz	629-632	772.9375	802.9375
General Use	Voice 25.0KHz	677-680	773.2375	803.2375
General Use	Voice 25.0KHz	797-800	773.9875	803.9875
General Use	Voice 25.0KHz	837-840	774.2375	804.2375
General Use	Voice 25.0KHz	877-880	774.4875	804.4875
General Use	Voice 25.0KHz	917-920	774.7375	804.7375
State License	Voice 25.0KHz	65-68	769.4125	799.4125
State License	Voice 25.0KHz	105-108	769.6625	799.6625
State License	Voice 25.0KHz	305-308	770.9125	800.9125
State License	Voice 25.0KHz	765-768	773.7875	803.7875
State License	Voice 25.0KHz	849-852	774.3125	804.3125
State License	Voice 25.0KHz	893-896	774.5875	804.5875
<u>Manistee</u>				
General Use	Voice 25.0KHz	165-168	770.0375	800.0375
General Use	Voice 25.0KHz	253-256	770.5875	800.5875
General Use	Voice 25.0KHz	297-300	770.8625	800.8625
General Use	Voice 25.0KHz	361-364	771.2625	801.2625
General Use	Voice 25.0KHz	413-416	771.5875	801.5875
General Use	Voice 25.0KHz	477-480	771.9875	801.9875
General Use	Voice 25.0KHz	521-524	772.2625	802.2625
General Use	Voice 25.0KHz	561-564	772.5125	802.5125
General Use	Voice 25.0KHz	613-616	772.8375	802.8375
General Use	Voice 25.0KHz	781-784	773.8875	803.8875
General Use	Voice 25.0KHz	821-824	774.1375	804.1375
General Use	Voice 25.0KHz	909-912	774.6875	804.6875
State License	Voice 25.0KHz	29-32	769.1875	799.1875
State License	Voice 25.0KHz	265-268	770.6625	800.6625
State License	Voice 25.0KHz	305-308	770.9125	800.9125
State License	Voice 25.0KHz	805-808	774.0375	804.0375
State License	Voice 25.0KHz	893-896	774.5875	804.5875
<u>Marquette</u>				
General Use	Voice 25.0KHz	45-48	769.2875	799.2875
General Use	Voice 25.0KHz	85-88	769.5375	799.5375
General Use	Voice 25.0KHz	133-136	769.8375	799.8375

General Use	Voice 25.0KHz	201-204	770.2625	800.2625
General Use	Voice 25.0KHz	241-244	770.5125	800.5125
General Use	Voice 25.0KHz	281-284	770.7625	800.7625
General Use	Voice 25.0KHz	329-332	771.0625	801.0625
General Use	Voice 25.0KHz	369-372	771.3125	801.3125
General Use	Voice 25.0KHz	425-428	771.6625	801.6625
General Use	Voice 25.0KHz	477-480	771.9875	801.9875
General Use	Voice 25.0KHz	533-536	772.3375	802.3375
General Use	Voice 25.0KHz	573-576	772.5875	802.5875
General Use	Voice 25.0KHz	621-624	772.8875	802.8875
General Use	Voice 25.0KHz	665-668	773.1625	803.1625
General Use	Voice 25.0KHz	741-744	773.6375	803.6375
General Use	Voice 25.0KHz	797-800	773.9875	803.9875
General Use	Voice 25.0KHz	865-868	774.4125	804.4125
General Use	Voice 25.0KHz	905-908	774.6625	804.6625
General Use	Voice 25.0KHz	945-948	774.9125	804.9125
State License	Voice 25.0KHz	33-36	769.2125	799.2125
State License	Voice 25.0KHz	193-196	770.2125	800.2125
State License	Voice 25.0KHz	233-236	770.4625	800.4625
State License	Voice 25.0KHz	305-308	770.9125	800.9125
State License	Voice 25.0KHz	645-648	773.0375	803.0375
State License	Voice 25.0KHz	725-728	773.5375	803.5375
State License	Voice 25.0KHz	765-768	773.7875	803.7875
State License	Voice 25.0KHz	813-816	774.0875	804.0875
State License	Voice 25.0KHz	853-856	774.3375	804.3375
State License	Voice 25.0KHz	925-928	774.7875	804.7875
<u>Mason</u>				
General Use	Voice 25.0KHz	13-16	769.0875	799.0875
General Use	Voice 25.0KHz	53-56	769.3375	799.3375
General Use	Voice 25.0KHz	93-96	769.5875	799.5875
General Use	Voice 25.0KHz	201-204	770.2625	800.2625
General Use	Voice 25.0KHz	241-244	770.5125	800.5125
General Use	Voice 25.0KHz	281-284	770.7625	800.7625
General Use	Voice 25.0KHz	337-340	771.1125	801.1125
General Use	Voice 25.0KHz	465-468	771.9125	801.9125
General Use	Voice 25.0KHz	505-508	772.1625	802.1625
General Use	Voice 25.0KHz	549-552	772.4375	802.4375
General Use	Voice 25.0KHz	601-604	772.7625	802.7625
General Use	Voice 25.0KHz	665-668	773.1625	803.1625
General Use	Voice 25.0KHz	753-756	773.7125	803.7125
General Use	Voice 25.0KHz	829-832	774.1875	804.1875
General Use	Voice 25.0KHz	869-872	774.4375	804.4375
State License	Voice 25.0KHz	153-156	769.9625	799.9625
State License	Voice 25.0KHz	229-232	770.4375	800.4375
State License	Voice 25.0KHz	813-816	774.0875	804.0875
State License	Voice 25.0KHz	853-856	774.3375	804.3375
State License	Voice 25.0KHz	929-932	774.8125	804.8125
<u>Mecosta</u>				
General Use	Voice 25.0KHz	81-84	769.5125	799.5125
General Use	Voice 25.0KHz	173-176	770.0875	800.0875
General Use	Voice 25.0KHz	249-252	770.5625	800.5625

General Use	Voice 25.0KHz	329-332	771.0625	801.0625
General Use	Voice 25.0KHz	381-384	771.3875	801.3875
General Use	Voice 25.0KHz	445-448	771.7875	801.7875
General Use	Voice 25.0KHz	501-504	772.1375	802.1375
General Use	Voice 25.0KHz	565-568	772.5375	802.5375
General Use	Voice 25.0KHz	701-704	773.3875	803.3875
General Use	Voice 25.0KHz	749-752	773.6875	803.6875
General Use	Voice 25.0KHz	825-828	774.1625	804.1625
General Use	Voice 25.0KHz	873-876	774.4625	804.4625
State License	Voice 25.0KHz	149-152	769.9375	799.9375
State License	Voice 25.0KHz	269-272	770.6875	800.6875
State License	Voice 25.0KHz	889-892	774.5625	804.5625
<u>Menominee</u>				
General Use	Voice 25.0KHz	93-96	769.5875	799.5875
General Use	Voice 25.0KHz	165-168	770.0375	800.0375
General Use	Voice 25.0KHz	257-260	770.6125	800.6125
General Use	Voice 25.0KHz	361-364	771.2625	801.2625
General Use	Voice 25.0KHz	405-408	771.5375	801.5375
General Use	Voice 25.0KHz	445-448	771.7875	801.7875
General Use	Voice 25.0KHz	505-508	772.1625	802.1625
General Use	Voice 25.0KHz	549-552	772.4375	802.4375
General Use	Voice 25.0KHz	589-592	772.6875	802.6875
General Use	Voice 25.0KHz	633-636	772.9625	802.9625
General Use	Voice 25.0KHz	701-704	773.3875	803.3875
General Use	Voice 25.0KHz	785-788	773.9125	803.9125
General Use	Voice 25.0KHz	877-880	774.4875	804.4875
State License	Voice 25.0KHz	153-156	769.9625	799.9625
State License	Voice 25.0KHz	313-316	770.9625	800.9625
State License	Voice 25.0KHz	685-688	773.2875	803.2875
State License	Voice 25.0KHz	805-808	774.0375	804.0375
<u>Midland</u>				
General Use	Voice 25.0KHz	97-100	769.6125	799.6125
General Use	Voice 25.0KHz	177-180	770.1125	800.1125
General Use	Voice 25.0KHz	241-244	770.5125	800.5125
General Use	Voice 25.0KHz	281-284	770.7625	800.7625
General Use	Voice 25.0KHz	353-356	771.2125	801.2125
General Use	Voice 25.0KHz	393-396	771.4625	801.4625
General Use	Voice 25.0KHz	465-468	771.9125	801.9125
General Use	Voice 25.0KHz	549-552	772.4375	802.4375
General Use	Voice 25.0KHz	601-604	772.7625	802.7625
General Use	Voice 25.0KHz	665-668	773.1625	803.1625
General Use	Voice 25.0KHz	745-748	773.6625	803.6625
General Use	Voice 25.0KHz	821-824	774.1375	804.1375
General Use	Voice 25.0KHz	917-920	774.7375	804.7375
State License	Voice 25.0KHz	73-76	769.4625	799.4625
State License	Voice 25.0KHz	113-116	769.7125	799.7125
State License	Voice 25.0KHz	189-192	770.1875	800.1875
State License	Voice 25.0KHz	265-268	770.6625	800.6625
State License	Voice 25.0KHz	885-888	774.5375	804.5375
<u>Missaukee</u>				
General Use	Voice 25.0KHz	137-140	769.8625	799.8625

General Use	Voice 25.0KHz	213-216	770.3375	800.3375
General Use	Voice 25.0KHz	333-336	771.0875	801.0875
General Use	Voice 25.0KHz	449-452	771.8125	801.8125
General Use	Voice 25.0KHz	489-492	772.0625	802.0625
General Use	Voice 25.0KHz	545-548	772.4125	802.4125
General Use	Voice 25.0KHz	637-640	772.9875	802.9875
General Use	Voice 25.0KHz	705-708	773.4125	803.4125
State License	Voice 25.0KHz	225-228	770.4125	800.4125
State License	Voice 25.0KHz	273-276	770.7125	800.7125
State License	Voice 25.0KHz	933-936	774.8375	804.8375
<u>Monroe</u>				
General Use	Voice 25.0KHz	53-56	769.3375	799.3375
General Use	Voice 25.0KHz	93-96	769.5875	799.5875
General Use	Voice 25.0KHz	217-220	770.3625	800.3625
General Use	Voice 25.0KHz	369-372	771.3125	801.3125
General Use	Voice 25.0KHz	437-440	771.7375	801.7375
General Use	Voice 25.0KHz	489-492	772.0625	802.0625
General Use	Voice 25.0KHz	529-532	772.3125	802.3125
General Use	Voice 25.0KHz	605-608	772.7875	802.7875
General Use	Voice 25.0KHz	757-760	773.7375	803.7375
General Use	Voice 25.0KHz	901-904	774.6375	804.6375
State License	Voice 25.0KHz	693-696	773.3375	803.3375
State License	Voice 25.0KHz	769-772	773.8125	803.8125
State License	Voice 25.0KHz	925-928	774.7875	804.7875
<u>Montcalm</u>				
General Use	Voice 25.0KHz	45-48	769.2875	799.2875
General Use	Voice 25.0KHz	137-140	769.8625	799.8625
General Use	Voice 25.0KHz	285-288	770.7875	800.7875
General Use	Voice 25.0KHz	349-352	771.1875	801.1875
General Use	Voice 25.0KHz	469-472	771.9375	801.9375
General Use	Voice 25.0KHz	513-516	772.2125	802.2125
General Use	Voice 25.0KHz	573-576	772.5875	802.5875
General Use	Voice 25.0KHz	613-616	772.8375	802.8375
General Use	Voice 25.0KHz	677-680	773.2375	803.2375
General Use	Voice 25.0KHz	785-788	773.9125	803.9125
General Use	Voice 25.0KHz	913-916	774.7125	804.7125
State License	Voice 25.0KHz	109-112	769.6875	799.6875
State License	Voice 25.0KHz	185-188	770.1625	800.1625
State License	Voice 25.0KHz	653-656	773.0875	803.0875
<u>Montmorency</u>				
General Use	Voice 25.0KHz	57-60	769.3625	799.3625
General Use	Voice 25.0KHz	337-340	771.1125	801.1125
General Use	Voice 25.0KHz	385-388	771.4125	801.4125
General Use	Voice 25.0KHz	441-444	771.7625	801.7625
General Use	Voice 25.0KHz	517-520	772.2375	802.2375
General Use	Voice 25.0KHz	557-560	772.4875	802.4875
General Use	Voice 25.0KHz	625-628	772.9125	802.9125
State License	Voice 25.0KHz	65-68	769.4125	799.4125
State License	Voice 25.0KHz	845-848	774.2875	804.2875
State License	Voice 25.0KHz	925-928	774.7875	804.7875
<u>Muskegon</u>				

General Use	Voice 25.0KHz	41-44	769.2625	799.2625
General Use	Voice 25.0KHz	129-132	769.8125	799.8125
General Use	Voice 25.0KHz	205-208	770.2875	800.2875
General Use	Voice 25.0KHz	289-292	770.8125	800.8125
General Use	Voice 25.0KHz	345-348	771.1625	801.1625
General Use	Voice 25.0KHz	405-408	771.5375	801.5375
General Use	Voice 25.0KHz	449-452	771.8125	801.8125
General Use	Voice 25.0KHz	521-524	772.2625	802.2625
General Use	Voice 25.0KHz	561-564	772.5125	802.5125
General Use	Voice 25.0KHz	637-640	772.9875	802.9875
General Use	Voice 25.0KHz	757-760	773.7375	803.7375
General Use	Voice 25.0KHz	821-824	774.1375	804.1375
General Use	Voice 25.0KHz	865-868	774.4125	804.4125
General Use	Voice 25.0KHz	905-908	774.6625	804.6625
State License	Voice 25.0KHz	25-28	769.1625	799.1625
State License	Voice 25.0KHz	65-68	769.4125	799.4125
State License	Voice 25.0KHz	113-116	769.7125	799.7125
State License	Voice 25.0KHz	233-236	770.4625	800.4625
State License	Voice 25.0KHz	733-736	773.5875	803.5875
State License	Voice 25.0KHz	933-936	774.8375	804.8375
<u>Newaygo</u>				
General Use	Voice 25.0KHz	121-124	769.7625	799.7625
General Use	Voice 25.0KHz	161-164	770.0125	800.0125
General Use	Voice 25.0KHz	357-360	771.2375	801.2375
General Use	Voice 25.0KHz	397-400	771.4875	801.4875
General Use	Voice 25.0KHz	457-460	771.8625	801.8625
General Use	Voice 25.0KHz	541-544	772.3875	802.3875
General Use	Voice 25.0KHz	593-596	772.7125	802.7125
State License	Voice 25.0KHz	765-768	773.7875	803.7875
State License	Voice 25.0KHz	845-848	774.2875	804.2875
<u>Oakland</u>				
General Use	Voice 25.0KHz	17-20	769.1125	799.1125
General Use	Voice 25.0KHz	57-60	769.3625	799.3625
General Use	Voice 25.0KHz	97-100	769.6125	799.6125
General Use	Voice 25.0KHz	137-140	769.8625	799.8625
General Use	Voice 25.0KHz	177-180	770.1125	800.1125
General Use	Voice 25.0KHz	281-284	770.7625	800.7625
General Use	Voice 25.0KHz	349-352	771.1875	801.1875
General Use	Voice 25.0KHz	393-396	771.4625	801.4625
General Use	Voice 25.0KHz	433-436	771.7125	801.7125
General Use	Voice 25.0KHz	477-480	771.9875	801.9875
General Use	Voice 25.0KHz	545-548	772.4125	802.4125
General Use	Voice 25.0KHz	609-612	772.8125	802.8125
General Use	Voice 25.0KHz	665-668	773.1625	803.1625
General Use	Voice 25.0KHz	713-716	773.4625	803.4625
General Use	Voice 25.0KHz	753-756	773.7125	803.7125
General Use	Voice 25.0KHz	821-824	774.1375	804.1375
General Use	Voice 25.0KHz	861-864	774.3875	804.3875
General Use	Voice 25.0KHz	905-908	774.6625	804.6625
State License	Voice 25.0KHz	145-148	769.9125	799.9125
State License	Voice 25.0KHz	185-188	770.1625	800.1625

State License	Voice 25.0KHz	225-228	770.4125	800.4125
State License	Voice 25.0KHz	265-268	770.6625	800.6625
State License	Voice 25.0KHz	653-656	773.0875	803.0875
State License	Voice 25.0KHz	733-736	773.5875	803.5875
State License	Voice 25.0KHz	773-776	773.8375	803.8375
State License	Voice 25.0KHz	813-816	774.0875	804.0875
State License	Voice 25.0KHz	933-936	774.8375	804.8375
<u>Oceana</u>				
General Use	Voice 25.0KHz	85-88	769.5375	799.5375
General Use	Voice 25.0KHz	217-220	770.3625	800.3625
General Use	Voice 25.0KHz	257-260	770.6125	800.6125
General Use	Voice 25.0KHz	325-328	771.0375	801.0375
General Use	Voice 25.0KHz	385-388	771.4125	801.4125
General Use	Voice 25.0KHz	433-436	771.7125	801.7125
General Use	Voice 25.0KHz	497-500	772.1125	802.1125
General Use	Voice 25.0KHz	569-572	772.5625	802.5625
General Use	Voice 25.0KHz	609-612	772.8125	802.8125
General Use	Voice 25.0KHz	709-712	773.4375	803.4375
General Use	Voice 25.0KHz	797-800	773.9875	803.9875
General Use	Voice 25.0KHz	941-944	774.8875	804.8875
State License	Voice 25.0KHz	145-148	769.9125	799.9125
State License	Voice 25.0KHz	193-196	770.2125	800.2125
State License	Voice 25.0KHz	309-312	770.9375	800.9375
State License	Voice 25.0KHz	685-688	773.2875	803.2875
<u>Ogemaw</u>				
General Use	Voice 25.0KHz	41-44	769.2625	799.2625
General Use	Voice 25.0KHz	85-88	769.5375	799.5375
General Use	Voice 25.0KHz	245-248	770.5375	800.5375
General Use	Voice 25.0KHz	329-332	771.0625	801.0625
General Use	Voice 25.0KHz	469-472	771.9375	801.9375
General Use	Voice 25.0KHz	513-516	772.2125	802.2125
General Use	Voice 25.0KHz	561-564	772.5125	802.5125
General Use	Voice 25.0KHz	613-616	772.8375	802.8375
General Use	Voice 25.0KHz	677-680	773.2375	803.2375
General Use	Voice 25.0KHz	717-720	773.4875	803.4875
General Use	Voice 25.0KHz	825-828	774.1625	804.1625
State License	Voice 25.0KHz	185-188	770.1625	800.1625
State License	Voice 25.0KHz	233-236	770.4625	800.4625
State License	Voice 25.0KHz	313-316	770.9625	800.9625
State License	Voice 25.0KHz	725-728	773.5375	803.5375
<u>Ontonagon</u>				
General Use	Voice 25.0KHz	49-52	769.3125	799.3125
General Use	Voice 25.0KHz	129-132	769.8125	799.8125
General Use	Voice 25.0KHz	321-324	771.0125	801.0125
General Use	Voice 25.0KHz	405-408	771.5375	801.5375
General Use	Voice 25.0KHz	445-448	771.7875	801.7875
General Use	Voice 25.0KHz	509-512	772.1875	802.1875
General Use	Voice 25.0KHz	589-592	772.6875	802.6875
General Use	Voice 25.0KHz	637-640	772.9875	802.9875
General Use	Voice 25.0KHz	941-944	774.8875	804.8875
State License	Voice 25.0KHz	265-268	770.6625	800.6625



State License	Voice 25.0KHz	693-696	773.3375	803.3375
State License	Voice 25.0KHz	773-776	773.8375	803.8375
<u>Osceola</u>				
General Use	Voice 25.0KHz	389-392	771.4375	801.4375
General Use	Voice 25.0KHz	473-476	771.9625	801.9625
General Use	Voice 25.0KHz	577-580	772.6125	802.6125
General Use	Voice 25.0KHz	617-620	772.8625	802.8625
General Use	Voice 25.0KHz	669-672	773.1875	803.1875
General Use	Voice 25.0KHz	741-744	773.6375	803.6375
General Use	Voice 25.0KHz	789-792	773.9375	803.9375
General Use	Voice 25.0KHz	833-836	774.2125	804.2125
General Use	Voice 25.0KHz	901-904	774.6375	804.6375
State License	Voice 25.0KHz	105-108	769.6625	799.6625
State License	Voice 25.0KHz	809-812	774.0625	804.0625
<u>Oscoda</u>				
General Use	Voice 25.0KHz	345-348	771.1625	801.1625
General Use	Voice 25.0KHz	393-396	771.4625	801.4625
General Use	Voice 25.0KHz	501-504	772.1375	802.1375
General Use	Voice 25.0KHz	541-544	772.3875	802.3875
General Use	Voice 25.0KHz	585-588	772.6625	802.6625
General Use	Voice 25.0KHz	901-904	774.6375	804.6375
State License	Voice 25.0KHz	193-196	770.2125	800.2125
State License	Voice 25.0KHz	265-268	770.6625	800.6625
State License	Voice 25.0KHz	885-888	774.5375	804.5375
<u>Otsego</u>				
General Use	Voice 25.0KHz	93-96	769.5875	799.5875
General Use	Voice 25.0KHz	241-244	770.5125	800.5125
General Use	Voice 25.0KHz	281-284	770.7625	800.7625
General Use	Voice 25.0KHz	321-324	771.0125	801.0125
General Use	Voice 25.0KHz	425-428	771.6625	801.6625
General Use	Voice 25.0KHz	477-480	771.9875	801.9875
General Use	Voice 25.0KHz	565-568	772.5375	802.5375
General Use	Voice 25.0KHz	617-620	772.8625	802.8625
General Use	Voice 25.0KHz	713-716	773.4625	803.4625
General Use	Voice 25.0KHz	753-756	773.7125	803.7125
General Use	Voice 25.0KHz	821-824	774.1375	804.1375
General Use	Voice 25.0KHz	941-944	774.8875	804.8875
State License	Voice 25.0KHz	105-108	769.6625	799.6625
State License	Voice 25.0KHz	145-148	769.9125	799.9125
State License	Voice 25.0KHz	653-656	773.0875	803.0875
State License	Voice 25.0KHz	893-896	774.5875	804.5875
<u>Ottawa</u>				
General Use	Voice 25.0KHz	49-52	769.3125	799.3125
General Use	Voice 25.0KHz	89-92	769.5625	799.5625
General Use	Voice 25.0KHz	177-180	770.1125	800.1125
General Use	Voice 25.0KHz	241-244	770.5125	800.5125
General Use	Voice 25.0KHz	281-284	770.7625	800.7625
General Use	Voice 25.0KHz	321-324	771.0125	801.0125
General Use	Voice 25.0KHz	365-368	771.2875	801.2875
General Use	Voice 25.0KHz	421-424	771.6375	801.6375
General Use	Voice 25.0KHz	465-468	771.9125	801.9125

General Use	Voice 25.0KHz	505-508	772.1625	802.1625
General Use	Voice 25.0KHz	549-552	772.4375	802.4375
General Use	Voice 25.0KHz	601-604	772.7625	802.7625
General Use	Voice 25.0KHz	673-676	773.2125	803.2125
General Use	Voice 25.0KHz	717-720	773.4875	803.4875
General Use	Voice 25.0KHz	781-784	773.8875	803.8875
General Use	Voice 25.0KHz	829-832	774.1875	804.1875
General Use	Voice 25.0KHz	917-920	774.7375	804.7375
State License	Voice 25.0KHz	33-36	769.2125	799.2125
State License	Voice 25.0KHz	105-108	769.6625	799.6625
State License	Voice 25.0KHz	189-192	770.1875	800.1875
State License	Voice 25.0KHz	273-276	770.7125	800.7125
State License	Voice 25.0KHz	805-808	774.0375	804.0375
State License	Voice 25.0KHz	893-896	774.5875	804.5875
<u>Presque Isle</u>				
General Use	Voice 25.0KHz	17-20	769.1125	799.1125
General Use	Voice 25.0KHz	125-128	769.7875	799.7875
General Use	Voice 25.0KHz	165-168	770.0375	800.0375
General Use	Voice 25.0KHz	357-360	771.2375	801.2375
General Use	Voice 25.0KHz	409-412	771.5625	801.5625
General Use	Voice 25.0KHz	453-456	771.8375	801.8375
General Use	Voice 25.0KHz	493-496	772.0875	802.0875
General Use	Voice 25.0KHz	537-540	772.3625	802.3625
General Use	Voice 25.0KHz	577-580	772.6125	802.6125
General Use	Voice 25.0KHz	637-640	772.9875	802.9875
General Use	Voice 25.0KHz	741-744	773.6375	803.6375
General Use	Voice 25.0KHz	785-788	773.9125	803.9125
General Use	Voice 25.0KHz	865-868	774.4125	804.4125
General Use	Voice 25.0KHz	905-908	774.6625	804.6625
State License	Voice 25.0KHz	25-28	769.1625	799.1625
State License	Voice 25.0KHz	185-188	770.1625	800.1625
State License	Voice 25.0KHz	685-688	773.2875	803.2875
State License	Voice 25.0KHz	725-728	773.5375	803.5375
State License	Voice 25.0KHz	853-856	774.3375	804.3375
<u>Roscommon</u>				
General Use	Voice 25.0KHz	13-16	769.0875	799.0875
General Use	Voice 25.0KHz	129-132	769.8125	799.8125
General Use	Voice 25.0KHz	169-172	770.0625	800.0625
General Use	Voice 25.0KHz	257-260	770.6125	800.6125
General Use	Voice 25.0KHz	297-300	770.8625	800.8625
General Use	Voice 25.0KHz	357-360	771.2375	801.2375
General Use	Voice 25.0KHz	401-404	771.5125	801.5125
General Use	Voice 25.0KHz	461-464	771.8875	801.8875
General Use	Voice 25.0KHz	525-528	772.2875	802.2875
General Use	Voice 25.0KHz	597-600	772.7375	802.7375
State License	Voice 25.0KHz	25-28	769.1625	799.1625
State License	Voice 25.0KHz	109-112	769.6875	799.6875
State License	Voice 25.0KHz	805-808	774.0375	804.0375
<u>Saginaw</u>				
General Use	Voice 25.0KHz	41-44	769.2625	799.2625
General Use	Voice 25.0KHz	85-88	769.5375	799.5375

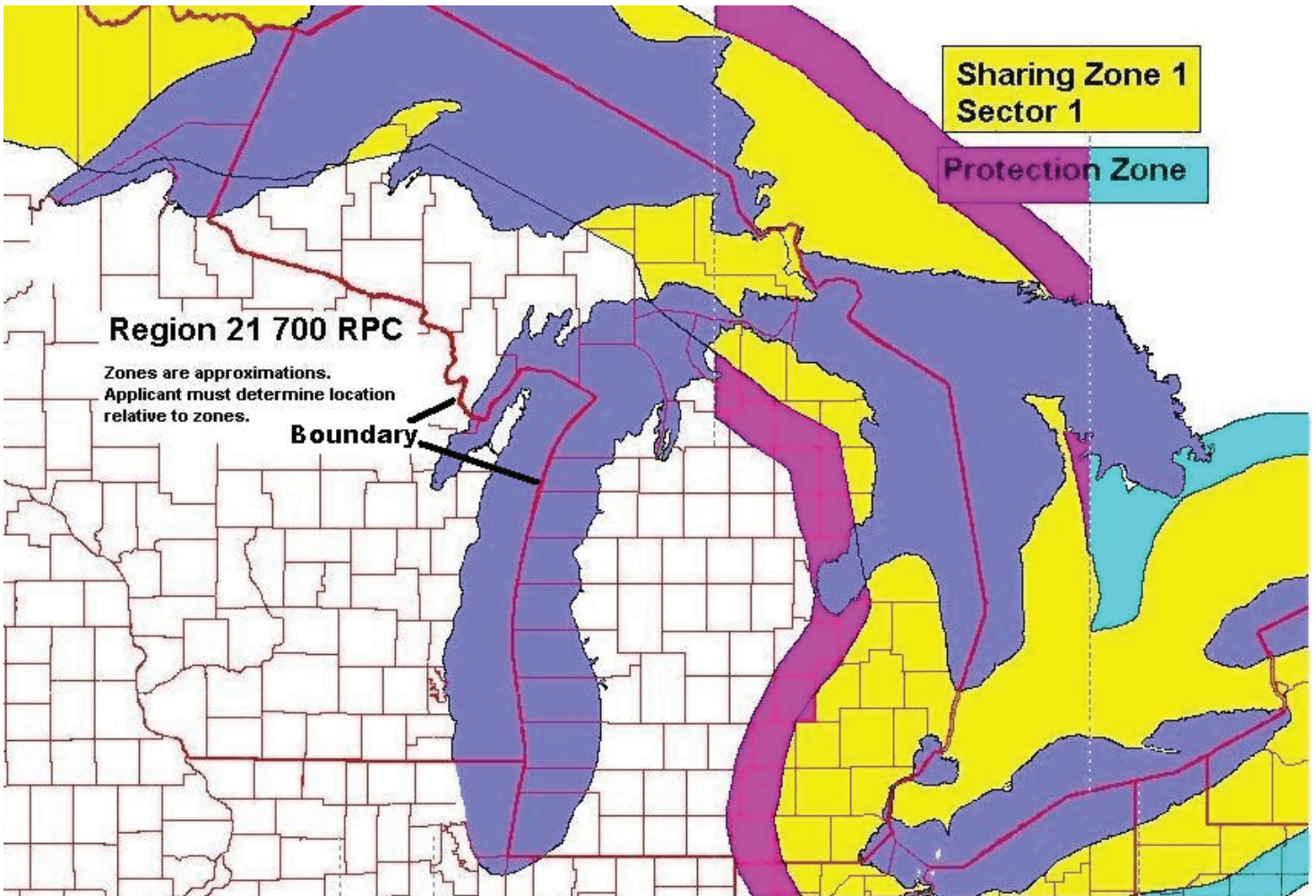
General Use	Voice 25.0KHz	133-136	769.8375	799.8375
General Use	Voice 25.0KHz	213-216	770.3375	800.3375
General Use	Voice 25.0KHz	289-292	770.8125	800.8125
General Use	Voice 25.0KHz	345-348	771.1625	801.1625
General Use	Voice 25.0KHz	405-408	771.5375	801.5375
General Use	Voice 25.0KHz	473-476	771.9625	801.9625
General Use	Voice 25.0KHz	517-520	772.2375	802.2375
General Use	Voice 25.0KHz	561-564	772.5125	802.5125
General Use	Voice 25.0KHz	617-620	772.8625	802.8625
General Use	Voice 25.0KHz	673-676	773.2125	803.2125
General Use	Voice 25.0KHz	757-760	773.7375	803.7375
General Use	Voice 25.0KHz	901-904	774.6375	804.6375
State License	Voice 25.0KHz	153-156	769.9625	799.9625
State License	Voice 25.0KHz	233-236	770.4625	800.4625
State License	Voice 25.0KHz	645-648	773.0375	803.0375
State License	Voice 25.0KHz	769-772	773.8125	803.8125
State License	Voice 25.0KHz	809-812	774.0625	804.0625
State License	Voice 25.0KHz	853-856	774.3375	804.3375
<u>Sanilac</u>				
General Use	Voice 25.0KHz	13-16	769.0875	799.0875
General Use	Voice 25.0KHz	53-56	769.3375	799.3375
General Use	Voice 25.0KHz	129-132	769.8125	799.8125
General Use	Voice 25.0KHz	209-212	770.3125	800.3125
General Use	Voice 25.0KHz	257-260	770.6125	800.6125
General Use	Voice 25.0KHz	297-300	770.8625	800.8625
General Use	Voice 25.0KHz	389-392	771.4375	801.4375
General Use	Voice 25.0KHz	449-452	771.8125	801.8125
General Use	Voice 25.0KHz	493-496	772.0875	802.0875
General Use	Voice 25.0KHz	569-572	772.5625	802.5625
General Use	Voice 25.0KHz	613-616	772.8375	802.8375
General Use	Voice 25.0KHz	669-672	773.1875	803.1875
General Use	Voice 25.0KHz	717-720	773.4875	803.4875
General Use	Voice 25.0KHz	829-832	774.1875	804.1875
State License	Voice 25.0KHz	149-152	769.9375	799.9375
State License	Voice 25.0KHz	229-232	770.4375	800.4375
State License	Voice 25.0KHz	313-316	770.9625	800.9625
State License	Voice 25.0KHz	649-652	773.0625	803.0625
State License	Voice 25.0KHz	725-728	773.5375	803.5375
State License	Voice 25.0KHz	805-808	774.0375	804.0375
State License	Voice 25.0KHz	929-932	774.8125	804.8125
<u>Schoolcraft</u>				
General Use	Voice 25.0KHz	41-44	769.2625	799.2625
General Use	Voice 25.0KHz	137-140	769.8625	799.8625
General Use	Voice 25.0KHz	257-260	770.6125	800.6125
General Use	Voice 25.0KHz	357-360	771.2375	801.2375
General Use	Voice 25.0KHz	397-400	771.4875	801.4875
General Use	Voice 25.0KHz	449-452	771.8125	801.8125
General Use	Voice 25.0KHz	501-504	772.1375	802.1375
General Use	Voice 25.0KHz	545-548	772.4125	802.4125
General Use	Voice 25.0KHz	585-588	772.6625	802.6625
General Use	Voice 25.0KHz	625-628	772.9125	802.9125

General Use	Voice 25.0KHz	745-748	773.6625	803.6625
General Use	Voice 25.0KHz	877-880	774.4875	804.4875
General Use	Voice 25.0KHz	941-944	774.8875	804.8875
State License	Voice 25.0KHz	265-268	770.6625	800.6625
State License	Voice 25.0KHz	313-316	770.9625	800.9625
State License	Voice 25.0KHz	693-696	773.3375	803.3375
State License	Voice 25.0KHz	805-808	774.0375	804.0375
State License	Voice 25.0KHz	929-932	774.8125	804.8125
<u>Shiawassee</u>				
General Use	Voice 25.0KHz	93-96	769.5875	799.5875
General Use	Voice 25.0KHz	397-400	771.4875	801.4875
General Use	Voice 25.0KHz	481-484	772.0125	802.0125
General Use	Voice 25.0KHz	525-528	772.2875	802.2875
General Use	Voice 25.0KHz	569-572	772.5625	802.5625
General Use	Voice 25.0KHz	797-800	773.9875	803.9875
General Use	Voice 25.0KHz	909-912	774.6875	804.6875
State License	Voice 25.0KHz	269-272	770.6875	800.6875
State License	Voice 25.0KHz	729-732	773.5625	803.5625
<u>St. Clair</u>				
General Use	Voice 25.0KHz	81-84	769.5125	799.5125
General Use	Voice 25.0KHz	325-328	771.0375	801.0375
General Use	Voice 25.0KHz	365-368	771.2875	801.2875
General Use	Voice 25.0KHz	409-412	771.5625	801.5625
General Use	Voice 25.0KHz	457-460	771.8625	801.8625
General Use	Voice 25.0KHz	513-516	772.2125	802.2125
General Use	Voice 25.0KHz	557-560	772.4875	802.4875
General Use	Voice 25.0KHz	601-604	772.7625	802.7625
General Use	Voice 25.0KHz	705-708	773.4125	803.4125
General Use	Voice 25.0KHz	789-792	773.9375	803.9375
State License	Voice 25.0KHz	73-76	769.4625	799.4625
State License	Voice 25.0KHz	693-696	773.3375	803.3375
<u>St. Joseph</u>				
General Use	Voice 25.0KHz	217-220	770.3625	800.3625
General Use	Voice 25.0KHz	333-336	771.0875	801.0875
General Use	Voice 25.0KHz	421-424	771.6375	801.6375
General Use	Voice 25.0KHz	461-464	771.8875	801.8875
General Use	Voice 25.0KHz	501-504	772.1375	802.1375
General Use	Voice 25.0KHz	561-564	772.5125	802.5125
General Use	Voice 25.0KHz	601-604	772.7625	802.7625
General Use	Voice 25.0KHz	825-828	774.1625	804.1625
State License	Voice 25.0KHz	33-36	769.2125	799.2125
State License	Voice 25.0KHz	809-812	774.0625	804.0625
<u>Tuscola</u>				
General Use	Voice 25.0KHz	173-176	770.0875	800.0875
General Use	Voice 25.0KHz	357-360	771.2375	801.2375
General Use	Voice 25.0KHz	429-432	771.6875	801.6875
General Use	Voice 25.0KHz	501-504	772.1375	802.1375
General Use	Voice 25.0KHz	553-556	772.4625	802.4625
General Use	Voice 25.0KHz	597-600	772.7375	802.7375
General Use	Voice 25.0KHz	661-664	773.1375	803.1375
General Use	Voice 25.0KHz	701-704	773.3875	803.3875

General Use	Voice 25.0KHz	749-752	773.6875	803.6875
General Use	Voice 25.0KHz	793-796	773.9625	803.9625
General Use	Voice 25.0KHz	865-868	774.4125	804.4125
General Use	Voice 25.0KHz	913-916	774.7125	804.7125
State License	Voice 25.0KHz	193-196	770.2125	800.2125
State License	Voice 25.0KHz	273-276	770.7125	800.7125
State License	Voice 25.0KHz	889-892	774.5625	804.5625
<u>Van Buren</u>				
General Use	Voice 25.0KHz	209-212	770.3125	800.3125
General Use	Voice 25.0KHz	325-328	771.0375	801.0375
General Use	Voice 25.0KHz	409-412	771.5625	801.5625
General Use	Voice 25.0KHz	481-484	772.0125	802.0125
General Use	Voice 25.0KHz	533-536	772.3375	802.3375
General Use	Voice 25.0KHz	573-576	772.5875	802.5875
General Use	Voice 25.0KHz	621-624	772.8875	802.8875
General Use	Voice 25.0KHz	661-664	773.1375	803.1375
General Use	Voice 25.0KHz	709-712	773.4375	803.4375
General Use	Voice 25.0KHz	909-912	774.6875	804.6875
State License	Voice 25.0KHz	109-112	769.6875	799.6875
State License	Voice 25.0KHz	269-272	770.6875	800.6875
State License	Voice 25.0KHz	889-892	774.5625	804.5625
<u>Washtenaw</u>				
General Use	Voice 25.0KHz	249-252	770.5625	800.5625
General Use	Voice 25.0KHz	289-292	770.8125	800.8125
General Use	Voice 25.0KHz	337-340	771.1125	801.1125
General Use	Voice 25.0KHz	377-380	771.3625	801.3625
General Use	Voice 25.0KHz	417-420	771.6125	801.6125
General Use	Voice 25.0KHz	457-460	771.8625	801.8625
General Use	Voice 25.0KHz	521-524	772.2625	802.2625
General Use	Voice 25.0KHz	561-564	772.5125	802.5125
General Use	Voice 25.0KHz	617-620	772.8625	802.8625
General Use	Voice 25.0KHz	673-676	773.2125	803.2125
General Use	Voice 25.0KHz	793-796	773.9625	803.9625
General Use	Voice 25.0KHz	913-916	774.7125	804.7125
State License	Voice 25.0KHz	33-36	769.2125	799.2125
State License	Voice 25.0KHz	725-728	773.5375	803.5375
State License	Voice 25.0KHz	853-856	774.3375	804.3375
<u>Wayne</u>				
General Use	Voice 25.0KHz	41-44	769.2625	799.2625
General Use	Voice 25.0KHz	85-88	769.5375	799.5375
General Use	Voice 25.0KHz	129-132	769.8125	799.8125
General Use	Voice 25.0KHz	169-172	770.0625	800.0625
General Use	Voice 25.0KHz	209-212	770.3125	800.3125
General Use	Voice 25.0KHz	257-260	770.6125	800.6125
General Use	Voice 25.0KHz	321-324	771.0125	801.0125
General Use	Voice 25.0KHz	361-364	771.2625	801.2625
General Use	Voice 25.0KHz	405-408	771.5375	801.5375
General Use	Voice 25.0KHz	469-472	771.9375	801.9375
General Use	Voice 25.0KHz	509-512	772.1875	802.1875
General Use	Voice 25.0KHz	553-556	772.4625	802.4625
General Use	Voice 25.0KHz	597-600	772.7375	802.7375

General Use	Voice 25.0KHz	701-704	773.3875	803.3875
General Use	Voice 25.0KHz	745-748	773.6625	803.6625
General Use	Voice 25.0KHz	785-788	773.9125	803.9125
General Use	Voice 25.0KHz	829-832	774.1875	804.1875
General Use	Voice 25.0KHz	869-872	774.4375	804.4375
General Use	Voice 25.0KHz	945-948	774.9125	804.9125
State License	Voice 25.0KHz	25-28	769.1625	799.1625
State License	Voice 25.0KHz	113-116	769.7125	799.7125
State License	Voice 25.0KHz	153-156	769.9625	799.9625
State License	Voice 25.0KHz	193-196	770.2125	800.2125
State License	Voice 25.0KHz	233-236	770.4625	800.4625
State License	Voice 25.0KHz	273-276	770.7125	800.7125
State License	Voice 25.0KHz	313-316	770.9625	800.9625
State License	Voice 25.0KHz	645-648	773.0375	803.0375
State License	Voice 25.0KHz	685-688	773.2875	803.2875
State License	Voice 25.0KHz	805-808	774.0375	804.0375
State License	Voice 25.0KHz	885-888	774.5375	804.5375
<u>Wexford</u>				
General Use	Voice 25.0KHz	17-20	769.1125	799.1125
General Use	Voice 25.0KHz	57-60	769.3625	799.3625
General Use	Voice 25.0KHz	97-100	769.6125	799.6125
General Use	Voice 25.0KHz	349-352	771.1875	801.1875
General Use	Voice 25.0KHz	441-444	771.7625	801.7625
General Use	Voice 25.0KHz	513-516	772.2125	802.2125
General Use	Voice 25.0KHz	553-556	772.4625	802.4625
General Use	Voice 25.0KHz	605-608	772.7875	802.7875
General Use	Voice 25.0KHz	661-664	773.1375	803.1375
General Use	Voice 25.0KHz	717-720	773.4875	803.4875
General Use	Voice 25.0KHz	757-760	773.7375	803.7375
General Use	Voice 25.0KHz	865-868	774.4125	804.4125
General Use	Voice 25.0KHz	917-920	774.7375	804.7375
State License	Voice 25.0KHz	113-116	769.7125	799.7125
State License	Voice 25.0KHz	185-188	770.1625	800.1625
State License	Voice 25.0KHz	233-236	770.4625	800.4625
State License	Voice 25.0KHz	313-316	770.9625	800.9625
State License	Voice 25.0KHz	733-736	773.5875	803.5875

# MAP OF REGION 21 (WITH PROTECTION ZONES)



# Appendix K

## MOU Document



TO: (signer of application and title)  
(agency name)

FROM: (name), Chairman

DATE: (mm/dd/yyyy)

SUBJECT: Memorandum of Understanding for Operating the 700 MHz Interoperability Channels

This memorandum of understanding (hereafter referred to as MOU) shall be attached to the application when submitting it. By virtue of signing and submitting the application and this MOU, (agency name) (hereafter referred to as APPLICANT) affirms its willingness to comply with the proper operation of the Interoperability (interoperability) channels as dictated by the Region Planning Committee (here after referred to as RPC) as approved by the Federal Communications Commission (hereafter referred to as FCC) and by the conditions of this MOU.

The APPLICANT shall abide by the conditions of this MOU which are as follows:

- To operate by all applicable State, County, and City laws/ordinances.
- To utilize "plain language" for all transmissions.
- To monitor the Calling Channel(s) as may be appropriate.
- To coordinate use of the Tactical Channels.
- To identify and eliminate inappropriate use.
- To limit secondary Trunked operation to the interoperability channels specifically approved on the application and limited to channels listed below.
- To relinquish secondary Trunked operation of interoperability channels to requests for primary conventional access.
- To grant access to channels according to the Priority Levels identified in this MOU.

The preceding conditions are the primary, though not complete, requirements for operating in the interoperability channels. Refer to the Region Plan for the complete requirements list.

Priority Levels:

1. Disaster or extreme emergency operation for mutual aid and interagency communications;
2. Emergency or urgent operation involving imminent danger to life or property;
3. Special event control, generally of a preplanned nature (including Task Force operations)
4. Single agency secondary communications.

**To resolve contention within the same priority, the channel should go to the organization with the wider span of control/authority. This shall be determined by the State Interoperability Executive Committee or RPC for the operation or by the levels of authority/government identified in the contention.**

For clarification purposes and an aid to operate as authorized, any fixed base or mobile relay stations identified on the license for temporary locations (FCC station class FBT or FB2T, respectively) shall remain within the licensed area of operation. Similarly, vehicular/mobile repeater stations (FCC station class MO3) shall remain within the licensed area of operation. Federal agencies are permitted access to interoperability channels only as authorized by 47 CFR 2.102 (c) & 2.103 and Part 7.12 of the NTIA Manual.

Any violation of this MOU, the Region Plan, or FCC Rule shall be addressed immediately. The first level of resolution shall be between the parties involved, next the State Interoperability Executive Committee or RPC, and finally the FCC.

Secondary Trunked Channels

7TAC51

799.14375

769.14375

7TAC52	799.64375	769.64375
7TAC53	800.14375	770.14375
7TAC54	800.64375	770.64375
7TAC71	803.10625	773.10625
7TAC72	803.60625	773.60625
7TAC73	804.10625	774.10625
7TAC74	804.60625	774.60625

\_\_\_\_\_  
(typed or printed name of authorized signer)  
\_\_\_\_\_  
(authorized signer identified above and consistent with application)  
\_\_\_\_\_  
(date)  
\_\_\_\_\_  
(agency name)  
\_\_\_\_\_  
(agency address)  
\_\_\_\_\_  
(agency address)

\_\_\_\_\_  
(agency address)  
\_\_\_\_\_  
(signer's phone)  
\_\_\_\_\_  
(signer's email address, if available)

# Appendix L

## Existing Interoperability Agreements

**MICHIGAN EMERGENCY PUBLIC SAFETY SYSTEM  
(MEPSS)  
REGULATIONS**

The radio frequency of 155.865 MHz will be used as a mobile emergency channel for mutual aid purposes. Base stations are strategically located throughout the State of Michigan for emergency contact for any mobile unit equipped with the MEPSS frequency. Base stations shall be installed and operated only as approved and recommended by the Michigan Public-Safety Frequency Advisory Committee.

The purpose of the MEPSS System is to implement a uniform, statewide frequency that will insure direct communications with all elements working together in an emergency situation. The system is intended to transform area police departments from a loose collection of independent units into a cohesive, coordinated team.

The MEPSS frequency will not be used within the licensee's normal service area for day-to-day operation. Inclusion of other local government mobile users, such as fire departments, civil defense units, federal agencies and public works departments shall be as recommended by the Michigan Public-Safety Frequency Advisory Committee

**REGULATION OF MEPSS**

**Section I — Requirements of Prime Station Locations**

1. 24-hour, 7 day-a-week, established dispatching service.
2. Personnel dedicated to radio dispatching on every shift.
3. Point-to-point communications facilities, either LEIN, radio or both.

**Section II - Operating Requirements**

1. All established base stations in the MEPSS System shall continuously monitor the MEPSS channel at all times.
2. The MEPSS System shall not be used within a licensee's normal service area for day-to-day operations.
3. Mobile originated traffic shall be confined to interagency coordination.

**MICHIGAN EMERGENCY PUBLIC SAFETY SYSTEM  
(MEPSS)  
REGULATIONS**

4. Base station originated traffic shall be confined to coordination of mobile units, except for weekly tests.
5. The MEPSS System shall not be used as an alternate for facilities presently available.
6. Plain language rather than-ten codes shall be used when operating on the MEPSS System.
7. If the entity selected for base operation fails to properly carry out the prescribed responsibilities for maintaining the system operation, the MPSFAC at its discretion may select another base station location to serve the area.
8. A weekly test will be conducted to assure that receivers and transmitters are in good working order. These weekly tests will be conducted on a talk around basis.
9. All operations on the MEPSS channel must be in compliance with Part 90 of the Federal Communications Commission's Rules & Regulations.

**Section III - Technical Requirements**

1. Prime system stations shall be equipped with a discreet receiver on the MEPSS channel. A scanner-type or dual, front-end receiver will not be accepted. Base station receivers shall not be equipped with a tone filter.
2. Tone squelch will not be used in the system.
3. The base station locations have been selected on the assumption of 90-100 watt transmitters with 3.db gain antennas located 100 feet AGL.
4. System calculations are based on mobile units with standard, 1/4 wave antennas and receivers with .5uv sensitivity.
5. If the entity selected for base operation fails to properly carry out the prescribed responsibilities for proper equipment maintenance, the MPSFAC may at its discretion select another base station location to serve the area.

## KEY TO MEPSS SYSTEM MAP

1. Detroit Police Department  
(313) 224-4425
2. Wayne County Sheriff (Detroit)  
(313)561-5680
3. Monroe County Sheriff (Monroe)  
(313) 241~2727
4. Oakland County Sheriff (Pontiac)  
(313) 658-4911
5. Macomb County Sheriff (Mt. Clemens)  
(313) 469-5151
6. St. Clair County Sheriff/Port Huron Police Department (Port Huron)  
(313) 985—8115
7. Sandusky MSP #34  
(313) 648-2233
8. Huron County Sheriff (Bad Axe)  
(517) 269-6421
9. Genesee County Communications Center (Flint)  
(313) 732-9911
10. Bay City MSP #31  
(517) 684-2234
11. Livingston County Sheriff (Howell)  
(517) 546-2440
12. East Lansing MSP (Operations Office)  
(517) 336-6100
13. Ann Arbor Police Department  
(313) 994-2911
14. Jackson County Sheriff (Jackson)  
(517) 788-4200
15. Branch County Sheriff (Coldwater)  
(517) 278-2325
16. Paw Paw MSP #51  
(616) 657-5551
17. Berrien County Sheriff (St. Joseph)  
(616) 983-7141
18. Battle Creek Police Department  
(616) 966-3363
19. Kent County Sheriff (Grand Rapids)  
(616) 774-3113
20. Muskegon County Central Dispatch (Muskegon)  
(616) 726-6650
21. Ithaca MSP #14  
(517) 875—4111
22. Houghton Lake MSP #75  
(517) 422-5101
23. Gaylord MSP #73  
(517) 732-5141
211. Petoskey MSP #78  
(616) 347-8101
25. Cheboygan MSP #72  
(616) 627-9973
26. Mecosta County Sheriff (Big Rapids)  
(616) 796-4811
27. Mason County Sheriff (Ludington)  
(616) 843-3475
28. Benzie County Sheriff (Beulah)  
(616) 882-4484
29. Traverse City MSP #71  
(616) 946-4646
30. Lake County Sheriff (Baldwin)  
(616) 745-4614
31. Alpena MSP #74  
(517) 354-4101
32. East Tawas MSP #32  
(517) 362-3434
33. St. Ignace MSP #83

## KEY TO MEPSS SYSTEM MAP

- (906) 643-8383
- 32. Sault Ste. Marie MSP #93  
(906) 632-2216
- 35. Newbetry MSP #82  
(906) 293-5151
- 36. Manistique MSP #84  
(906) 341-2101
- 37. Munising MSP #91  
(906) 387-4550
- 38. Negaunee MSP #81  
(906) 475-9922
- 39. Gladstone MSP #65  
(906) 428-1212
- 40. Dickinson County Sheriff (Iron Mountain)  
(906) 774-6262
- 41. Stephenson MSP #89  
(906) 753-2275
- 42. Iron River MSP #92  
(906) 265-9916
- 43. Wakefield MSP #87  
(906) 224-9691
- 44. L'Anse MSP #88  
(906) 524-6161
- 45. Calumet MSP #90  
(906) 337-2211
- 46. Ontonagon County Sheriff (Ontonagon)  
(906) 884-4901
- 47. Manistee MSP #77  
(616) 723-3535
- 48. Clare County Sheriff (Harrison)  
(517) 539-7166





MICHIGAN PLAN  
FOR  
OPERATION and MANAGEMENT  
of  
A STATEWIDE COORDINATING  
FIRE COMMUNICATIONS SYSTEM

Operated

on

THE COMMON FREQUENCY

154.295 MHz

## FIRE COMMUNICATIONS SYSTEM

The frequency 154.295 MHz has been designated for use exclusively in an interagency fire coordinating system in the State of Michigan.

The system will be a valuable tool, which will help to assure the safety of firemen and fire equipment, and aid in the coordination of multi-jurisdictional responses to emergency situations.

The statewide use of this emergency channel will be used, under sound technical and operational standards, to provide the following major improvements in fire communications:

- (1) Provide improved command and control communications to supervisory personnel in situations where fire agencies from multiple jurisdictions are responding to a mutual aid request or other emergency.
- (2) Permit direct mobile or portable to mobile or portable emergency communications between fire units from various jurisdictions.

Considerable time and money will be expended in developing and implementing a statewide fire coordinating communications system on 154.29S MHz. The communications system can only achieve its full potential if its day to day use is prudently managed.

The principal objective of the state's management plan is to assure disciplined, controlled use of the radio network so that it will be available in times of emergency to provide the benefits it is intended to provide.

### STATE NETWORK GOVERNING BOARD

The entire fire community of the State of Michigan will be served by the emergency fire coordinating communications system on 154.295 MHz. Each agency will have a significant investment in portable or mobile equipment to operate on the channel. Accordingly, over-all responsibility for, and control of, the system is vested in a broadly representative board. Members of the board represent the full -range of types of fire entities, which will be using the system, including a representative appointed from each of the following:

Michigan State Police, Fire Marshal Division Michigan  
 Natural Resources, Forest Fire Division  
 Michigan State Firemen's Association  
 Michigan Fire Chiefs Association  
 Michigan Fire Frequency Coordinator

### OPERATION OF THE SYSTEM

Responsibility for operation and management of the system will be vested in the using fire agencies under detailed-operating procedures established by the governing board.

## COORDINATION OF REGULATORY AFFAIRS

Like any other fire service communications system a fire communications system operating on 154.295 MHz must be licensed by the Federal Communications Commission and operated in accord with its rules. The entity responsible for day to day operation of the network will be responsible for all licensing and regulatory matters.

Each application for use of the frequency should be submitted first to the frequency advisory committee for Michigan. Detailed technical and operating plans for the network should be submitted to the fire frequency coordinator and the fire coordinating communications governing board.

If the request conforms with the planned use of the frequency, a recommendation will be made to grant the request. The frequency coordinator's recommendation must then accompany the application when it is filed with the Commission.

## ESTABLISHMENT OF TECHNICAL STANDARDS

The existing radio networks offer the most optimum emergency channel resource. If an agency's current operation is in the high-band VHF spectrum and existing communications units have compatible configuration, it should be feasible to add the emergency channel to its mobile or portable radios. Participating agencies presently operating on low band VHF or UHF frequencies will have to add to their intercommunications capability on 154.295 MHz.

The desired level of interagency communications on an existing fire or other emergency can be served by either mobile or hand-held radio equipment; however, individual system requirements will dictate the most optimum method for a given system.

Regular testing to assure the technical effectiveness of the emergency network is essential. The nature of such tests and the manner in which they are conducted to be established by the governing board.

## ESTABLISHMENT OF OPERATING STANDARDS

The dedication of the frequency 154.295 MHz for use in an interagency fire coordination radio network has set aside a valuable spectrum resource. Rigid control of radio traffic and enforced discipline will be necessary to achieve the goals of the fire service and thus justify the allocation of the frequency. Unnecessary and uncontrolled traffic on the channel would ultimately defeat its intended purpose. Accordingly, a principal objective of the network operating procedure must be to establish means of assuring disciplined and professional use of the system.

In general, the fire coordinating channel can be used in any fire service action requiring communication between units under circumstances where regular radio services are not available.

The fire coordinating radio network is primarily for portable and mobile service. It is principally intended to provide a communications capability among fire units of differing jurisdictions when an emergency arises which renders the regular channels of communication inadequate to provide the communications capability needed to successfully complete the operation.

In order to preserve the emergency nature of the network, mobile installation must be limited to fire vehicles, in accordance with Federal Communications Commission Rules & Regulations for use of the frequency.

Operating procedures on the channel will follow those procedures outlined in the Associated Public-Safety Communications Officers manual of system operating procedures. Codes are not recommended and are not to be used in radio transmissions of multi-jurisdictional nature.

Where many units are involved in a particular emergency response, individual mobile and portable operators must exercise discretion to avoid overloading the fire coordination channel. Intradepartment transmission must be on that department's regular frequency with transmission on 154.295 MHz limited to only the transmissions required to properly coordinate the department's participation in the emergency response with units of other departments on the scene.

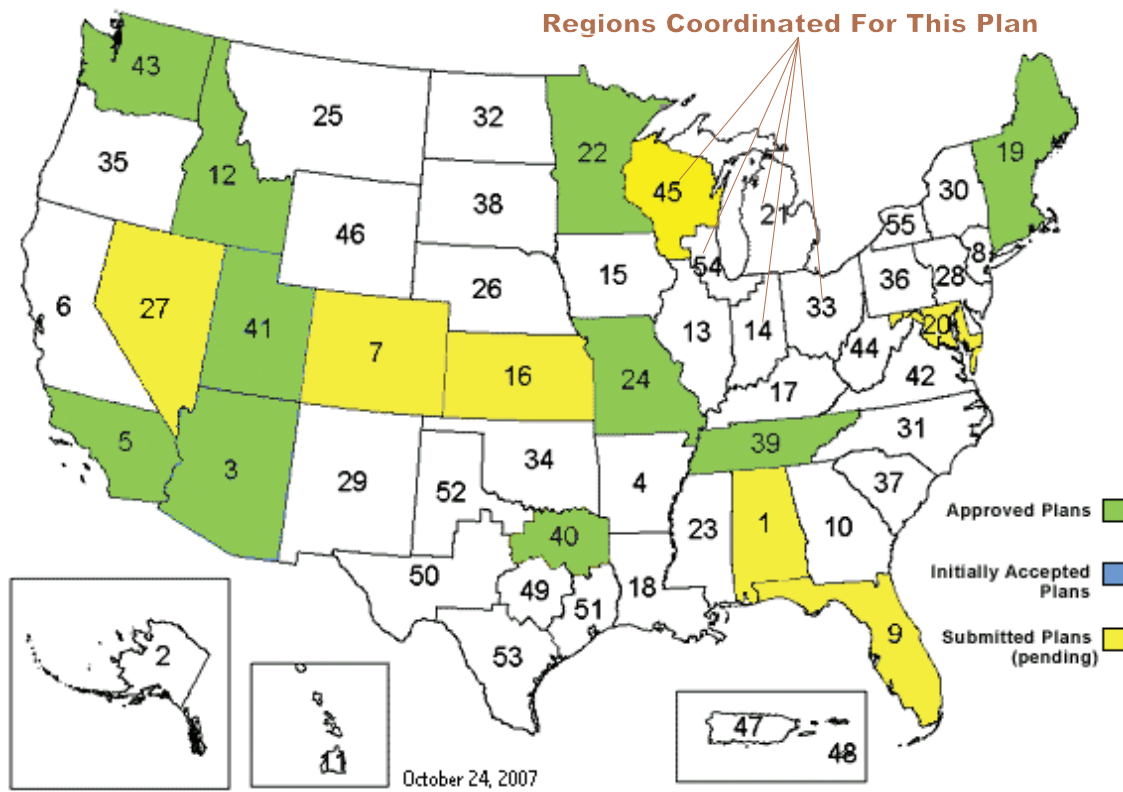
## Appendix M

### Inter-Regional Coordination Agreements

## APPENDIX M - INTER-REGIONAL COORDINATION AGREEMENTS

### MAP OF REGIONS

#### Regions 45, 54, 14 and 33 Coordinated with Region 21



This section contains (A) copies of concurrence agreements from each of the required adjacent Regions for the entire plan; and (B) copies of signed dispute resolution agreements from each of the required Regions.

# INDIANA 700 MHZ REGION PLANNING COMMITTEE

## FCC REGION 14

**H. Anthony Stantz, Chairman**  
**Alex R. Whitaker, Vice Chairman**  
**c/o Indiana State Police, Communications Division**  
**8500 East 21<sup>st</sup> Street, Indianapolis, Indiana 46219**  
**TX: 317-899-8524 ; FAX: 317-899-8282**  
**E-mail: [astantz@isp.in.gov](mailto:astantz@isp.in.gov)**  
**E-mail: [awhitaker@isp.in.gov](mailto:awhitaker@isp.in.gov)**

May 18, 2007

Joseph M. Turner, Chairman  
Region 21 700 MHz RPC  
2719 State St.  
Saginaw, MI 48602

Dear Mr. Turner,

Region 14 has reviewed the proposed 700 MHz Region Plan for FCC Region 21. After review from the Committee, Vice-Chairman Whitaker, and myself, Region 14 hereby gives its approval to and concurrence with Region 21's 700 MHz Region Plan. Please send an interference resolution document to Region 14 for the appropriate signatures so that final approval for your plan may be obtained.

Thank you,

A handwritten signature in black ink, appearing to be 'H. Anthony Stantz', written in a cursive style.

H. Anthony Stantz,  
Chairman  
Region 14 700 MHz Regional Planning Committee  
8500 East 21<sup>st</sup> Street  
Indianapolis, IN 46219

REC'D 11/2/07



Region 33 (Ohio) 700 MHz. Planning Committee  
Paul M. Mayer, Chairman  
Ohio Office of Information Technology  
2323 W. 5<sup>th</sup> Ave., Columbus, Ohio 43204  
614-995-0063 (voice) 995-0067 (fax)  
E-mail [paul.mayer@ohio.gov](mailto:paul.mayer@ohio.gov) or [mayerp@apco911.org](mailto:mayerp@apco911.org)

December 27, 2006

Joseph M. Turner, Chairman  
Region 21 700 MHz. Planning Committee  
2719 State Street  
Saginaw, Michigan 48602

Dear Mr. Turner:

After reviewing the Michigan 700 MHz. Plan, we find it very similar to Ohio's in that coordination, for the most part, will be processed using the CAPRAD pre-assignment data base and that applications within 70 miles of an adjacent state will also be coordinated with that (those) state(s).

This being the case, the Region 33 (Ohio) 700 MHz. Planning Committee concurs with the Region 21 (Michigan) Plan as published and in effect on April 10, 2006.

We look forward to continued good relations, working together for the overall improvement of public safety and interoperable communications within and between our respective states.

Sincerely,

Paul M. Mayer, Chairman





June 30, 2006

Mr. Joseph M. Turner  
Chairman  
Region 21 700 MHz Planning Committee  
2719 State Street  
Saginaw, MI 48602

RE: Letter of Concurrence for Regional Plan

Dear Mr. Turner:

Region 45 is in receipt of your proposed 700 MHz Regional Plan submitted to this Committee on April 20, 2006. The members of the Region 45 700 MHz Planning Committee have reviewed and formally approved Region 21's Plan.

This letter serves as the official written concurrence of Region 45 to your proposed 700 MHz Regional Plan.

Sincerely,

DAVID E. KIRK  
CHIEF OF POLICE

RUSSELL R. SCHREINER  
COMMUNICATION/ELECTRONICS  
TECHNICIAN  
CHAIRPERSON REGION 45

DEPARTMENT  
OF POLICE

CITY HALL  
828 CENTER AVE.  
SHEBOYGAN, WI  
53081-4499

920/459-3333  
FAX 920/459-0205

RRS:pmk



## Region 54 700 MHz RPC

111 East Illinois Ave

Morris, IL 60450

815-405-0998 / 815-941-5718 fax

[ckspire@grundy911.org](mailto:ckspire@grundy911.org)

---

January 19, 2007

Joseph M. Turner, Chairman  
2719 State Street  
Saginaw, MI 48602

Dear Mr. Turner

Region 54 is in receipt of your proposed 700 MHz Regional Plan, submitted to this Committee on 10/11/06. Region 54 met on 1/10/2006, reviewed and formally approved Region 21's Plan.

This letter serves as the official, written concurrence of Region 54 to your proposed 700 MHz Regional Plan.

Sincerely,

A handwritten signature in black ink, appearing to read "William J. Carter".

Mr. William J Carter  
Chairperson Region 54  
111 East Illinois Ave  
Morris, IL 60450

**Inter-Regional Coordination Procedures  
and  
Procedures for Resolution of Disputes  
That May Arise Under FCC Approved Plans**

**I. INTRODUCTION**

This is a mutually agreed upon Inter-Regional Coordination Procedures Agreement by, between, and among all of the following 700 MHz Regional Planning Committees: Region 14 Indiana, Region 21 Michigan, Region 22 Minnesota, Region 33 Ohio, Region 45 Wisconsin, and Region 54 Southern Lake Michigan. In order to encourage the use of a single standard process for inter-Region coordination, additional public safety Regions bordering any of the Regions named above may be added to this agreement without requiring the approval of those above not bordering the newly joining Region.

**II. INTER-REGIONAL COORDINATION AGREEMENT**

The following is the specific procedure for inter-regional coordination which has been agreed upon by the signers, initially Regions 14, 21, 22, 33, 45, 54. It will be used to coordinate with adjacent Regional Planning Committees when a license application is filed with the RPC.

**A. Definitions**

The Protected Service Area shall be defined as the area within the applicant's geographical boundaries plus three (3) miles. The interference contours shall be defined as a 5 dBu co-channel contour, a 60 dBu adjacent channel contour between two 12.5 kHz analog systems with channel centers spaced at 12.5 kHz, or as defined in the current version of TSB-88 for other specific channel bandwidths, spacings, and emission types. The applicant is responsible for determining the correct interference criteria to be utilized when submitting their application package. Other proposed definitions of service area or interference between

applicants shall be justified with an accompanying *Memorandum of Understanding (MOU)* or other documentation submitted as part of the license application, i.e. mutual aid agreements.

If the frequency assignment recommended by the home Region does NOT comply with the current CAPRAD frequency sort AND either of the two conditions below apply, then the application must be submitted for approval by the affected adjacent Region(s) before forwarding to an authorized frequency coordinator.

- 1) An applicant's proposed protected service area (PSA) contour lies within three miles of the border with an adjacent Public Safety Region(s), OR
- 2) Any of the applicant's predicted interference contours extend into an adjacent Public Safety Region(s).

In these cases the application for non-conforming channel use must be submitted for approval by the affected adjoining Region(s) using the evaluation and consent process outlined below.

#### **B. Coordination Procedures**

1. Intra-regional review and coordination takes place, including a technical review resulting in recommendation of channels to be assigned.
2. After intra-regional review, a copy of those proposed frequency-specific applications requiring adjacent Region approval, including a definition statement of proposed protected service area, PSA and interference contour maps, and other supporting documentation shall then be forwarded to the adjacent Region(s) for review. This information will be sent to the adjacent Regional chairperson(s) using the CAPRAD database.
3. The adjacent Region reviews the application according to its approved Plan and established policies. If the application is approved, a letter of concurrence shall be

sent, via the CAPRAD database, to the initiating Regional chairperson within thirty (30) calendar days. If the adjacent Region(s) cannot approve the request, the adjacent Region shall document the reasons for partial or non-concurrence, and respond within 10 (Ten) calendar days via email.

### **C. Dispute Resolution**

4. If the applicant and its home Region cannot modify the application to satisfy the objections of the adjacent Region then, a working group comprised of representatives of the two Regions shall be convened within thirty (30) calendar days to attempt to resolve the dispute. The working group shall then report its findings within thirty (30) calendar days to the Regional chairperson's email (CAPRAD database).

Findings may include, but not be limited to:

- (i) Unconditional concurrence;
- (ii) Conditional concurrence contingent upon modification of applicant's technical parameters; or
- (iii) Partial or total denial of proposed frequencies due to inability to meet co-channel or adjacent channel interference free protection to existing licensees within the adjacent Region.

5. If the Inter-Regional Working Group cannot resolve the dispute, then the matter shall be forwarded for evaluation to the National Plan Oversight Committee (NPOC), of the National Public Safety Telecommunications Council. The Regional Plan Oversight Committee (RPOC) is a committee within the National Public Safety Telecommunications Council (NPSTC) established to arbitrate disputes between 700 MHz Regions that cannot be resolved by the impacted Regions. Each Region

involved in the dispute shall include a detailed explanation of its position, including engineering studies and any other technical information deemed relevant. The NPOC will, within thirty (30) calendar days, report its recommendation(s) to the Regional chairpersons via the CAPRAD database. The NPOC's decision may support either of the disputing Regions or it may develop a proposal that it deems mutually advantageous to each disputing Region.

**D. Notification of Approval to Coordinate**

6. Where adjacent Region concurrence has been secured, and the channel assignments would result in no change to the Region's currently Commission approved channel assignment matrix, the initiating Region may then advise the applicant(s) that their application may be forwarded to an authorized frequency coordinator for processing and filing with the Commission.
7. Where adjacent Region concurrence has been secured, and the channel assignments would result in a change to the Region's current Commission approved channel assignment matrix, then the initiating Region shall file with the Commission a *Petition to Amend* their current Regional plan's frequency matrix, reflecting the new channel assignments, with a copy of the *Petition* sent to the adjacent Regional chairperson(s). Upon Commission issuance of an *Order* adopting the amended channel assignment matrix, the initiating Regional chairperson will send a copy of the *Order* to all adjacent Regional chairperson(s) and may then advise the applicant(s) that they may forward their applications to an authorized frequency coordinator for processing and filing with the Commission.

8. In the event that multiple Region plans require modifications, each Region is responsible for taking the actions indicated and notifying all adjacent Regions via the CAPRAD database when their *Order* is issued by the FCC.

Appendix W

Region 21 700 MHz Plan

III. CONCLUSION

IN AGREEMENT HERETO, Regions 14, 21, 22, 33, 45, and 54 do hereunto set their authorized signatures the day and year first above written.

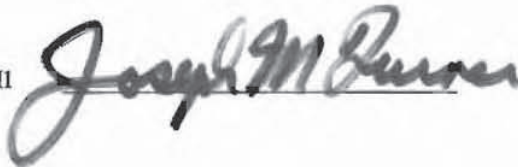
Respectfully,

Region 14 - IN



Date: 4/28/2007

Region 21 - MI



Date: Dec. 15, 2007

Region 22 - MN

\_\_\_\_\_

Date: \_\_\_\_\_

Region 33 - OH

\_\_\_\_\_

Date: \_\_\_\_\_

Region 45 - WI

\_\_\_\_\_

Date: \_\_\_\_\_

Region 54 - SLM

\_\_\_\_\_

Date: \_\_\_\_\_



Appendix W

Region 21 700 MHz Plan

III. CONCLUSION

IN AGREEMENT HERETO, Regions 14, 21, 22, 33, 45, and 54 do hereunto set their authorized signatures the day and year first above written.

Respectfully,

Region 14 - IN \_\_\_\_\_

Date: \_\_\_\_\_

Region 21 - MI

*Joseph M. Turner*

Date: *Dec. 15, 2007*

Region 22 - MN \_\_\_\_\_

Date: \_\_\_\_\_

Region 33 - OH

*Paul M. Mayer*

Date: *12-10-2007*

Region 45 - WI \_\_\_\_\_

Date: \_\_\_\_\_

Region 54 - SLM \_\_\_\_\_

Date: \_\_\_\_\_

Appendix W

Region 21 700 MHz Plan

III. CONCLUSION

IN AGREEMENT HERETO, Regions 14, 21, 22, 33, 45, and 54 do herunto set their authorized signatures the day and year first above written.

Respectfully,

Region 14 - IN \_\_\_\_\_

Date: \_\_\_\_\_

Region 21 - MI Joseph M. Turner

Date: Dec. 15, 2007

Region 22 - MN \_\_\_\_\_

Date: \_\_\_\_\_

Region 33 - OH \_\_\_\_\_

Date: \_\_\_\_\_

Region 45 - WI [Signature]

Date: 5-10-07

Region 54 - SLM \_\_\_\_\_

Date: \_\_\_\_\_

Appendix W

Region 21 700 MHz Plan

III. CONCLUSION

IN AGREEMENT HERETO, Regions 14, 21, 22, 33, 45, and 54 do hereunto set their authorized signatures the day and year first above written.

Respectfully,

Region 14 - IN \_\_\_\_\_

Date: \_\_\_\_\_

Region 21 - MI Joseph M. Turner

Date: Dec. 15, 2007

Region 22 - MN \_\_\_\_\_

Date: \_\_\_\_\_

Region 33 - OH \_\_\_\_\_

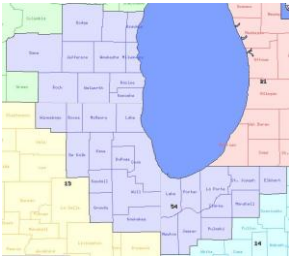
Date: \_\_\_\_\_

Region 45 - WI \_\_\_\_\_

Date: \_\_\_\_\_

Region 54 - SLM [Signature]

Date: 5-1-07



Region 54 700 MHz  
RCRS  
Southern Lake Michigan  
Region

Chris Kindelspire  
Chairperson  
Executive Member  
Northern Illinois

Carl Guse  
Co-Chair  
Executive Member  
Wisconsin

Ned Jacklin  
Secretary  
Executive Member  
Northern Illinois

Alex Whitaker  
Executive Member  
Indiana

Douglas Cochran  
Executive Member  
Indiana

William Carter  
Executive Member  
Southern Illinois (R13)

Kathleen M. Lordo  
Executive Member  
Wisconsin

November 15, 2010

To: Keith Bradshaw  
Michigan Public Safety Frequency Advisory Committee  
Region 21

From: Chris Kindelspire  
Chairperson Region 54 RCRS  
78 W Lowery Rd  
Morris Illinois 60450

Dear Mr. Bradshaw,

Region 54 (Southern Lake Michigan) is in receipt of your proposed 700 MHz Regional Plan submitted to this Committee on July 19<sup>th</sup> 2012. Region 54 met on November 13<sup>th</sup> 2012 and formally approved Region 21's plan.

This letter serves as the official written concurrence of Region 54 to your proposed 700 MHz Regional Plan update.

Sincerely,

A handwritten signature in black ink, appearing to read "Chris Kindelspire". The signature is written in a cursive style.

Chris Kindelspire  
Region 54 RCRS Chairman  
Grundy County ETSB  
78 W Lowery Rd  
Morris, IL 60450

**INDIANA 700 MHZ REGION PLANNING  
COMMITTEE  
FCC REGION 14**

**Alex R. Whitaker, Chairman**

**Douglas B. Cochrane, Vice Chairman**

**c/o The State of Indiana – The Integrated Public Safety Commission**

**Indiana Government Center North – Room N340**

**100 North Senate Avenue, Indianapolis, Indiana 46204**

**TX: 317-234-6513 ; FAX: 317-234-6514**

**E-mail: [alwhitaker@ipsc.in.gov](mailto:alwhitaker@ipsc.in.gov)**

**E-mail: [dcochrane@ipsc.in.gov](mailto:dcochrane@ipsc.in.gov)**

August 31, 2012

Keith M. Bradshaw, Chairman  
Michigan Public Safety Frequency Advisory Committee  
Macomb County Radio Department  
21930 Dunham  
Mount Clemens, MI 48043

Dear Mr. Bradshaw,

The Region 14 700 MHz RPC has reviewed the Region 21 700 MHz plan at its meeting on July 27, 2012, and is in concurrence with the provisions of the plan. Therefore, Region 14 hereby grants its approval of this revision of the Region 21 700 MHz plan. Further, Region 14 would like to extend congratulations to the Region 21 700 MHz RPC for the fine results of your hard work.

Sincerely,



Alex R. Whitaker  
Chairman, Region 14 700 MHz RPC



Region 33 (Ohio) 700 MHz. Planning Committee  
Paul M. Mayer, Chairman  
2022 Charmingfare Street, Columbus, Ohio 43228  
614-312-1199 (voice) e-mail [region33.rpc@gmail.com](mailto:region33.rpc@gmail.com)

January 4, 2013

Keith M. Bradshaw, Chairman  
Michigan Public Safety Frequency Advisory Committee  
Macomb County Radio Department  
21930 Dunham  
Mount Clemens, MI 48043

Dear Mr. Bradshaw,

The Region 33 700 MHz RPC has reviewed the Region 21 700 MHz plan and is in concurrence with the provisions of the plan. Therefore, Region 33 hereby grants its approval of this revision of the Region 21 700 MHz plan.

Respectfully,

A handwritten signature in blue ink that reads "Paul M. Mayer". The signature is written in a cursive, flowing style.

Paul M. Mayer  
Chairman



## Region 45 700 MHz RPC

January 14th, 2013

Mr. Keith Bradshaw  
Michigan Public Safety Frequency Advisory Committee  
Macomb County Radio Department  
21930 Dunham  
Mount Clemens, MI 48043

Dear Mr. Bradshaw:

The Region 45 700 MHz Regional Planning Committee (RPC) has recently reviewed the Region 21 700 MHz plan, and is satisfied with the provisions of the plan. Therefore, the Region 45 RPC wishes to issue its concurrence and approval of the revision of the Region 21 700 MHz plan. Region 45 wishes to thank Region 21 for their patients during this review process, and to congratulate the Region 21 700 MHz RPC for their excellent work.

Sincerely,

Russell R. Schreiner  
Chairman, Region 45 700MHz RPC  
Communications & Electronics Technician  
Sheboygan Police Department  
1315 North 23rd Street  
Sheboygan, WI 53081  
Ph # 920-459-3351  
rschreiner@ci.sheboygan.wi.us